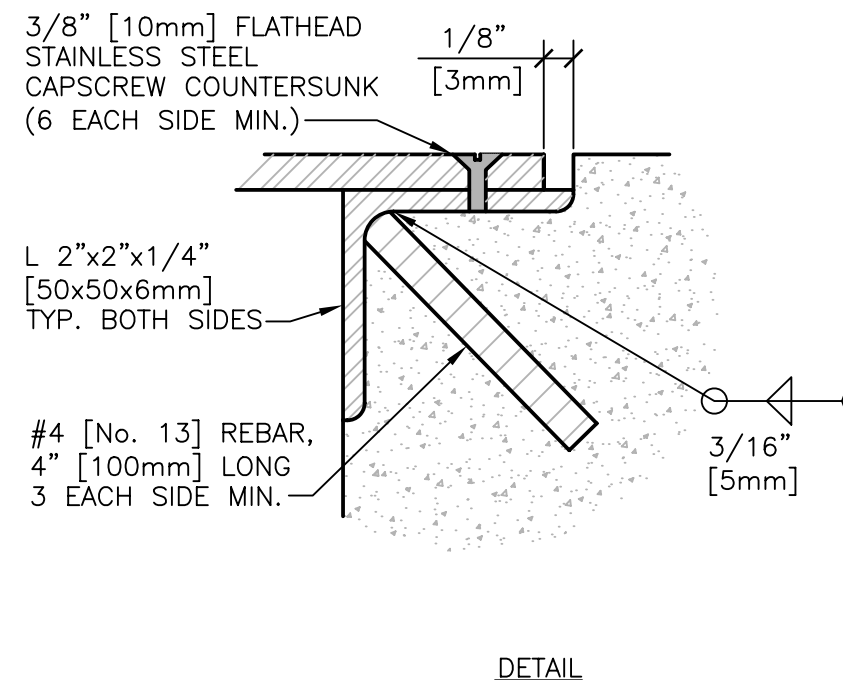
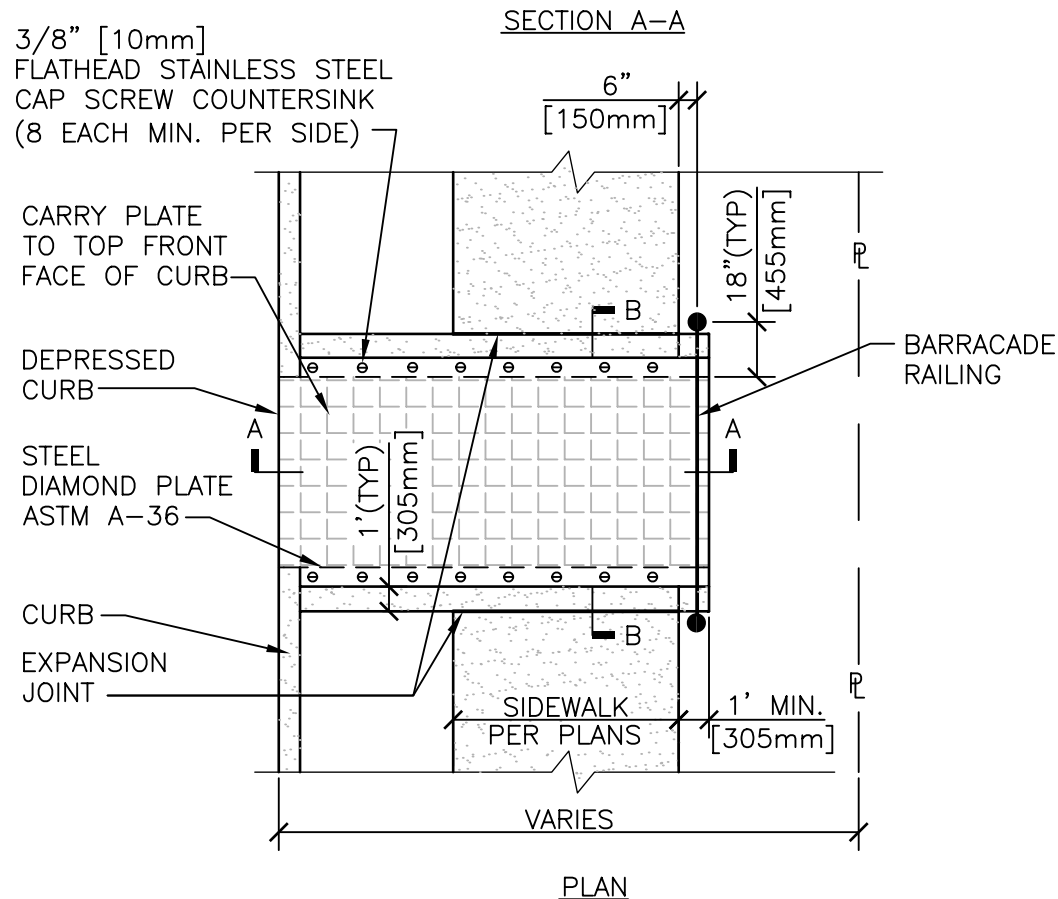


**NOTES:**

1. ( → ) INDICATES DIRECTION OF FLOW.
2. DIMENSION 'B' EQUALS 'A'+1' [305mm].
3. 1/2" [13mm] THICK STEEL DIAMOND PLATE ASTM A-36. STEEL DIAMOND PLATE SHALL BE GIVEN ONE SHOP COAT OF PAINT NO.1 PER VA SPECIFICATIONS. EXPOSED METAL SHALL BE PAINTED WITH TWO COATS OF SSPC PAINT NO. 5 PER VA SPECIFICATIONS.
4. 'H' EQUALS CURB FACE HEIGHT. DIMENSION TO BE NOTED ON PLANS OR ESTABLISHED IN THE FIELD.
5. FOR CURB AND GUTTER, USE 2' [610mm] TRANSITIONS TO VERTICAL CURB.
6. FOR MULTIPLE SCUPPERS PROVIDE 4" [100mm] BETWEEN ADJACENT PANELS OF STEEL DIAMOND PLATE. INTERMEDIATE POSTS FOR BARRICADE RAILINGS SHALL BE PLACED MIDWAY IN 4" [100mm] AREA BETWEEN ADJACENT PANELS.
7. STEEL DIAMOND PLATE SHALL BE DELIVERED AS ONE PIECE, CONFORMING TO THE REQUIRED SCUPPER DIMENSIONS. PLATES SHALL NOT BE SPLICED.
8. PROVIDE A MIN. 1" [25mm] LIP BETWEEN FLOW LINE OF SCUPPER AND PAVEMENT SURFACE.



# **SIDEWALK SCUPPER - TYPE 2**

NTS

DETAIL TITLE / SIDEWALK SCUPPER - TYPE 2

SCALE : NONE

DATE ISSUED: DECEMBER 2008

CAD DETAIL NO.: SD320523-08.DWG