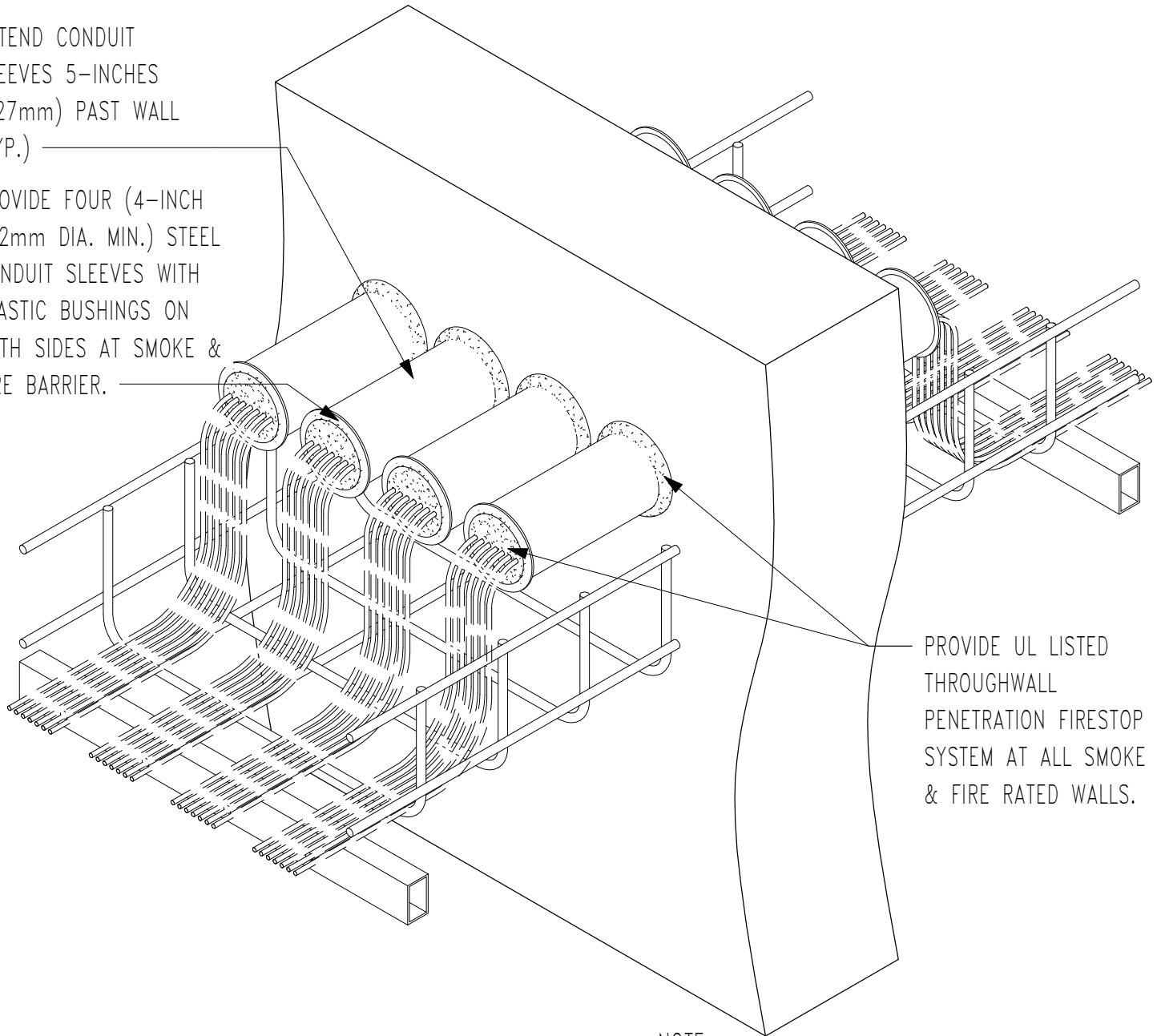


EXTEND CONDUIT
SLEEVES 5-INCHES
(127mm) PAST WALL
(TYP.)

PROVIDE FOUR (4-INCH
102mm DIA. MIN.) STEEL
CONDUIT SLEEVES WITH
PLASTIC BUSHINGS ON
BOTH SIDES AT SMOKE &
FIRE BARRIER.



PROVIDE UL LISTED
THROUGHWALL
PENETRATION FIRESTOP
SYSTEM AT ALL SMOKE
& FIRE RATED WALLS.

NOTE:

1. CABLE-TRAY SHALL NOT PENETRATE THE SMOKE/FIRE BARRIER WALL.
2. ENGINEER TO PROVIDE TOTAL QUANTITY OF SLEEVES REQUIRED FOR 150% OF RATED CABLE TRAY CAPACITY

CABLE TRAY TRANSITION AT SMOKE & FIRE-RATED WALLS

Scale: N.T.S.



U.S. Department
of Veterans Affairs

DETAIL TITLE: CABLE TRAY TRANSITION AT SMOKE & FIRE-RATED WALLS

SCALE: N.T.S.

DATE ISSUED: 03/01/23

CAD DETAIL NO.: SD260533-06