



Department of
Veterans Affairs

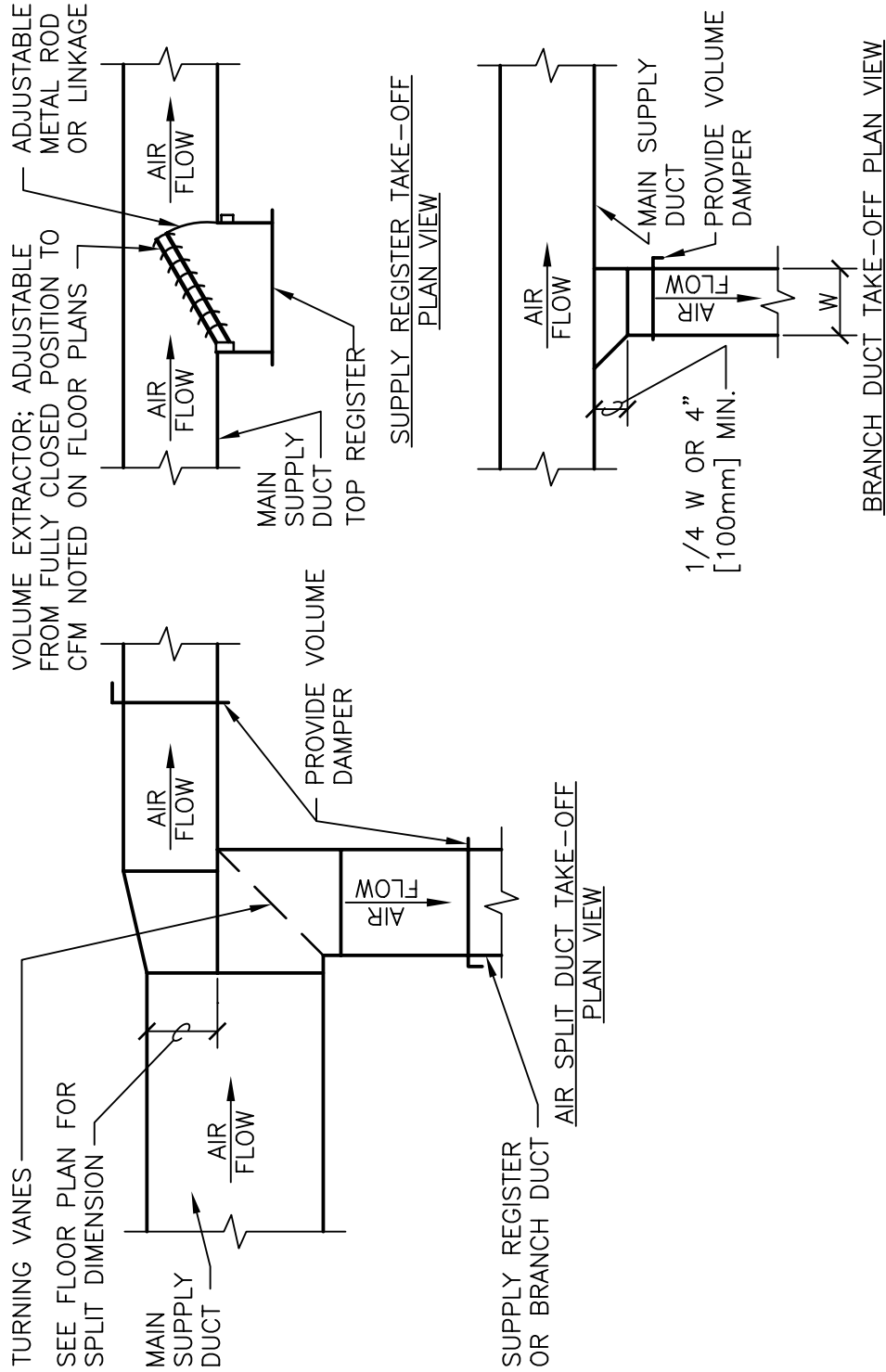
DETAIL TITLE / SUPPLY DUCTWORK TAKE-OFFS

SCALE :NONE

DATE ISSUED: DECEMBER 2008

CAD DETAIL NO.:

SD233100-04.DWG



SUPPLY DUCTWORK TAKE-OFFS

#

NTS DESIGNER'S NOTES:

1. THE SUPPLY REGISTER TAKE-OFF MAY BE USED FOR UP TO 25% OF THE MAIN DUCT CFM. THE BRANCH DUCT TAKE-OFF MAY BE USED FOR UP TO 15% OF THE MAIN DUCT CFM ANYTIME AND UP TO 40% WHEN THE MAIN DUCT VELOCITY IS 1000 FPM [5.1 M/S] OR LESS. THE AIR SPLIT DUCT TAKE-OFF SHALL BE USED IN ALL OTHER CASES AND MAY BE USED AT ANYTIME.
2. SHOW ALL VOLUME DAMPERS ON FLOOR PLANS.