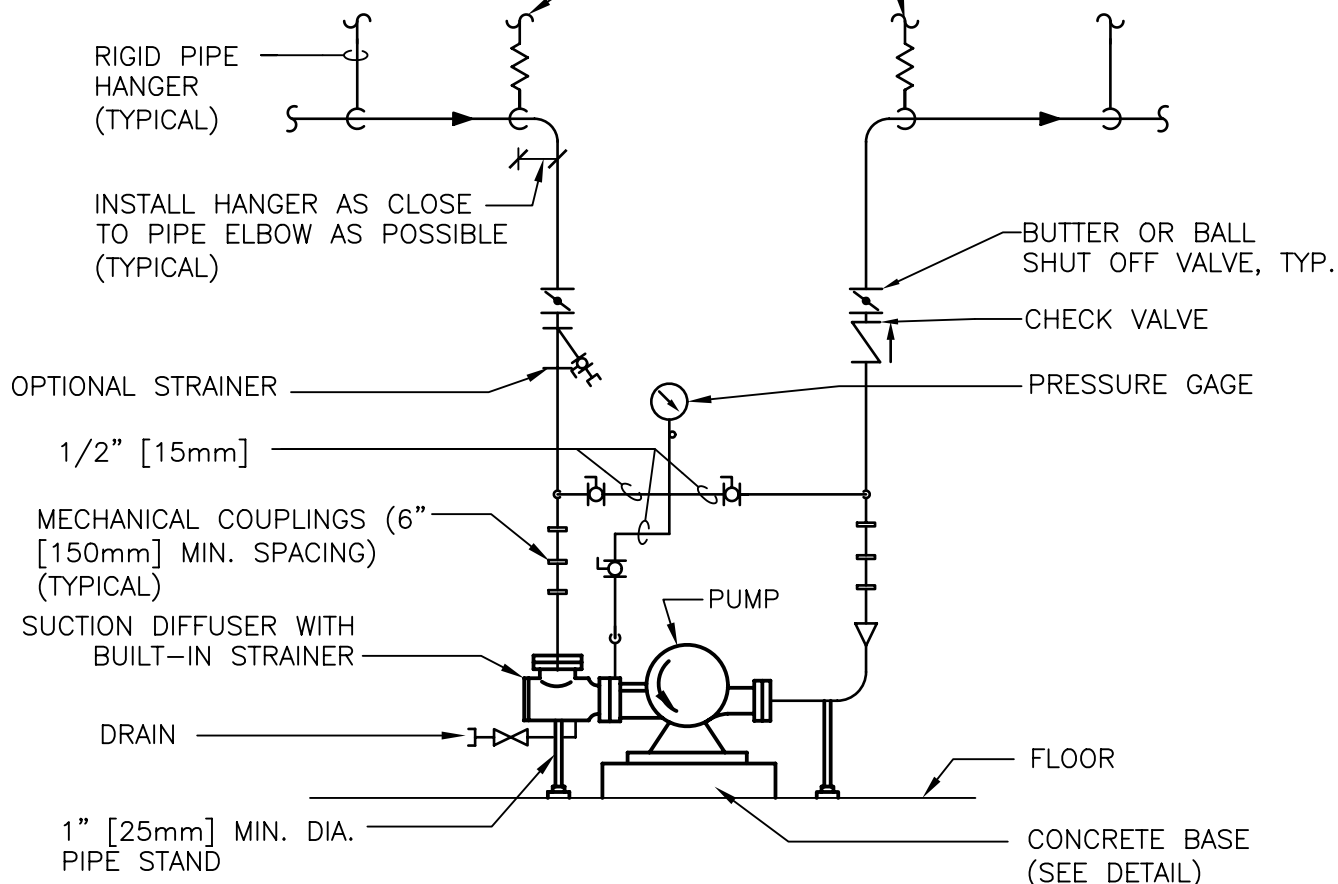


FIRST 3 HANGERS FOR EACH PIPE AND BRANCH SHALL BE SPRING & NEOPRENE TYPE. TYPE "H" FOR 4" [100mm] DIA. PIPE AND SMALLER. TYPE "H-P" FOR 5" [125mm] DIA. PIPE AND LARGER.



NOTES:

SEE SPECIFICATION SECTION "PUMPS" FOR Y STRAINER OPTION.

DOUBLE SUCTION FLOOR-MOUNTED PUMPS - CONNECTIONS WITH MECHANICAL COUPLINGS

#

NTS

DESIGNER'S NOTE:

1. CHECK VALVE IS OPTIONAL FOR SINGLE PUMP EXCEPT FOR COOLING TOWER PUMP. USE THIS DETAIL ONLY FOR PUMPS IN A MECHANICAL BUILDING WHERE POSSIBLE VIBRATION WILL NOT BE OBJECTIONABLE AND WHERE APPROVED BY VA.
2. COUPLINGS SHALL NOT BE USED IN HOT WATER APPLICATIONS.



Department of
Veterans Affairs

DETAIL TITLE / DOUBLE SUCTION FLOOR-MOUNTED PUMPS -
CONNECTIONS WITH MECHANICAL COUPLINGS

SCALE :NONE

DATE ISSUED :DECEMBER 2008

CADD DETAIL NO. : SD232123-05.DWG