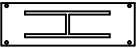
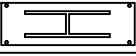





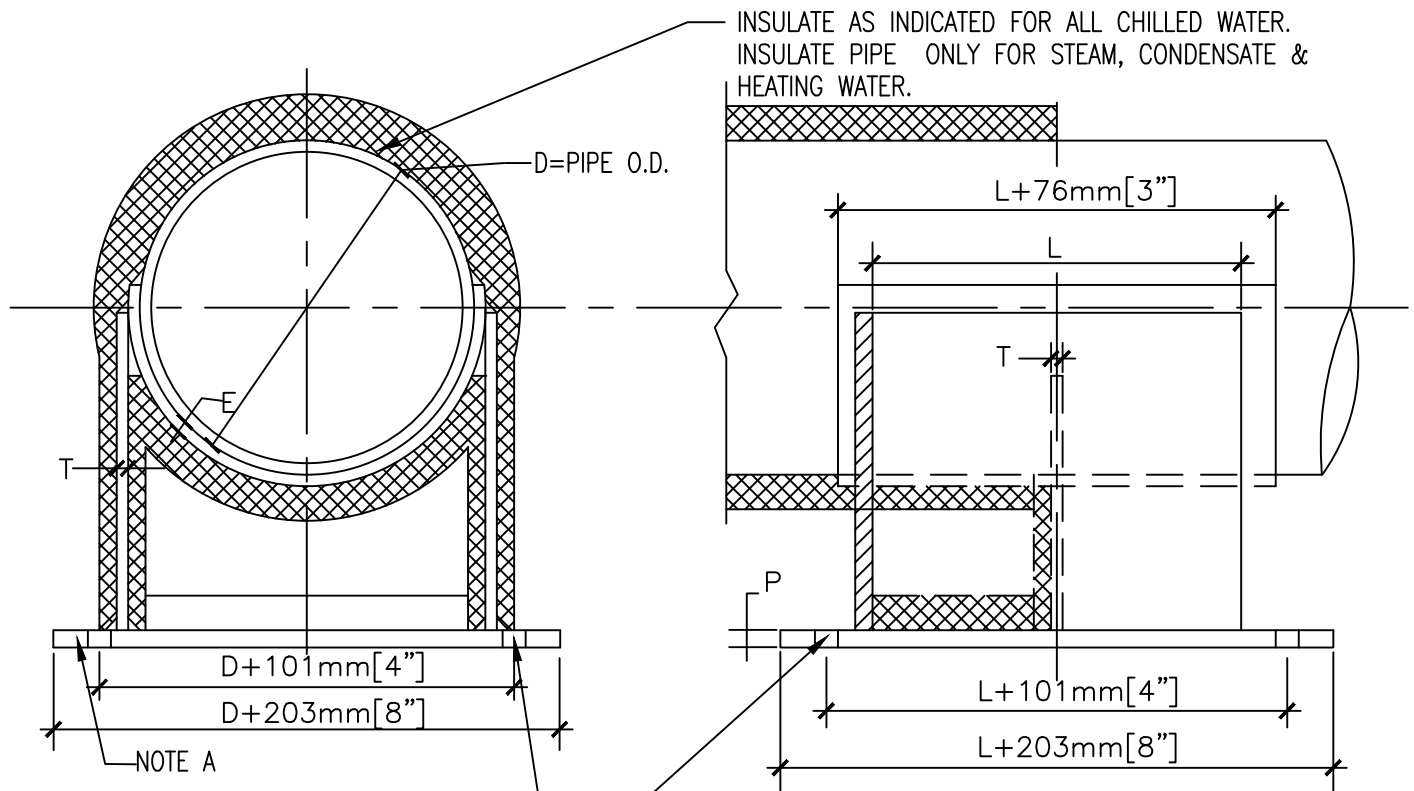


PIPE ANCHOR SCHEDULE														BOLT PATTERN
D		L		P		T		E		N		S		
mm	in	mm	in	mm	in	mm	in	mm	in	mm	in	mm	in	
152	6	216	8½	19	¾	10	⅜	6	¼	102	4	22	⅞	
203	8	254	10	19	¾	13	½	6	¼	102	4	22	⅞	
254	10	305	12	19	¾	13	½	6	¼	102	4	22	⅞	
305	12	356	14	19	¾	13	½	6	¼	102	4	22	⅞	
356	14	406	16	19	¾	13	½	13	½	102	4	22	⅞	
406	16	457	18	19	¾	13	½	13	½	102	4	22	⅞	
457	18	508	20	25	1	13	⅝	13	½	152	6	25	1	

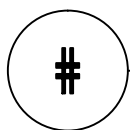


NOTES:

- A. INSTALL WALL PLATE FIRST THEN WELD ON REMAINING ASSEMBLY. ONE WALL PLATE FOR BOTH CHILLED WATER S.&R. IS OPTIONAL.

ANCHOR BOLTS

N=NUMBER S=SIZE
 DRILL $\phi = S+3.175\text{mm}$
 DRILL $\phi = S+[\frac{1}{8}"]$



LARGE PIPE ANCHOR 152-457mm [6" -18"]

NTS



Department of
Veterans Affairs

DETAIL TITLE: LARGE PIPE ANCHOR 152-457mm [6"-18"]

SCALE :NONE

DATE ISSUED: 11/01/2017

CAD DETAIL NO.: SD230511-24.DWG