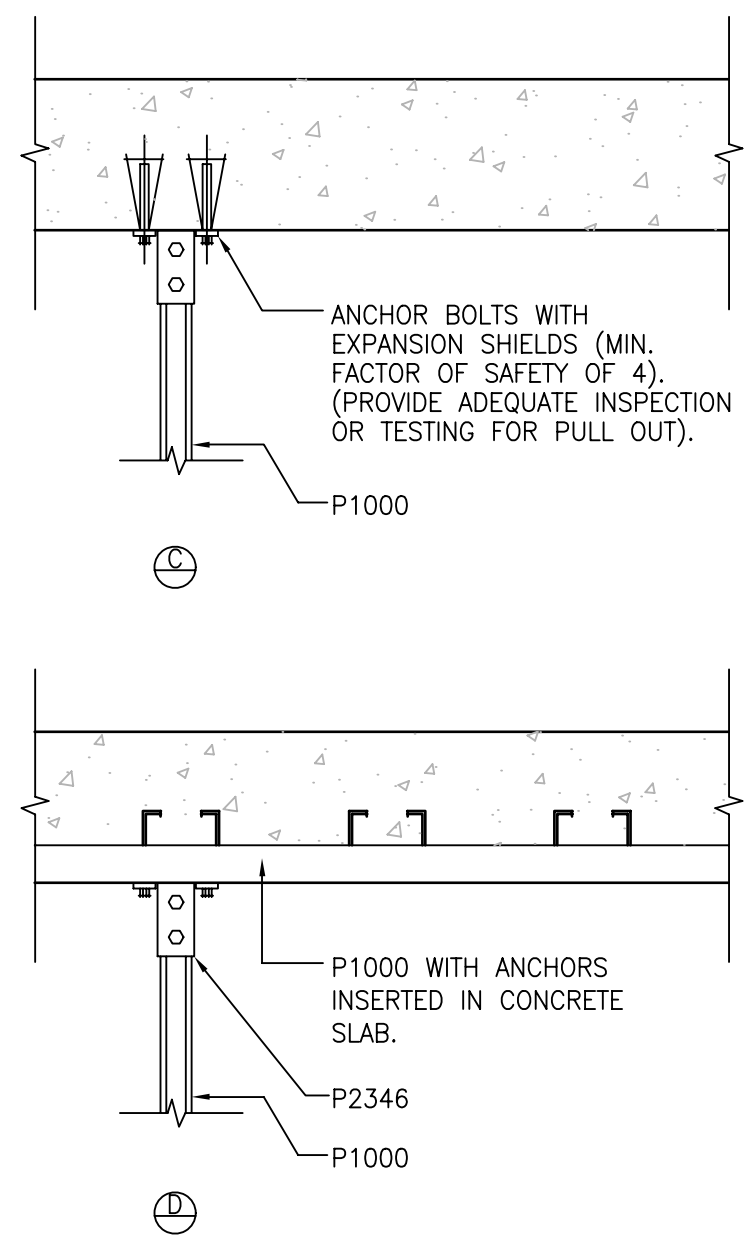
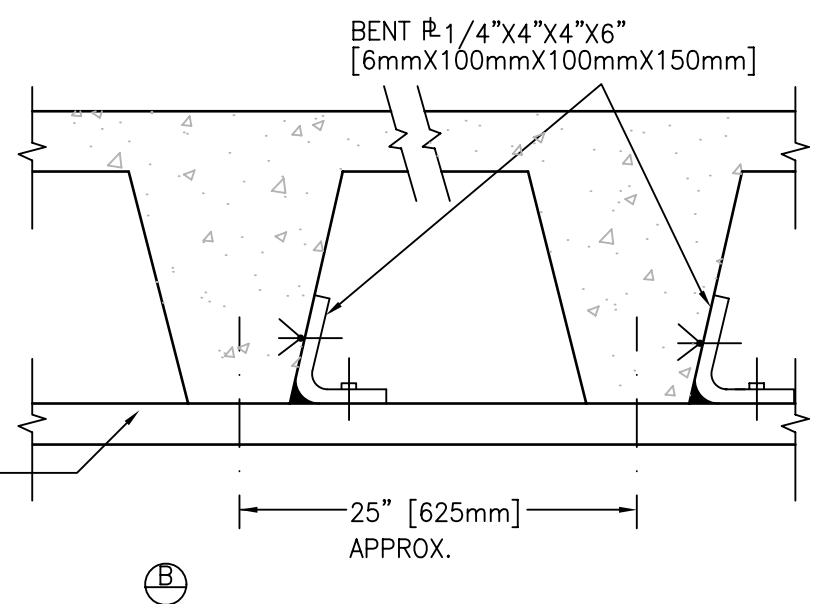
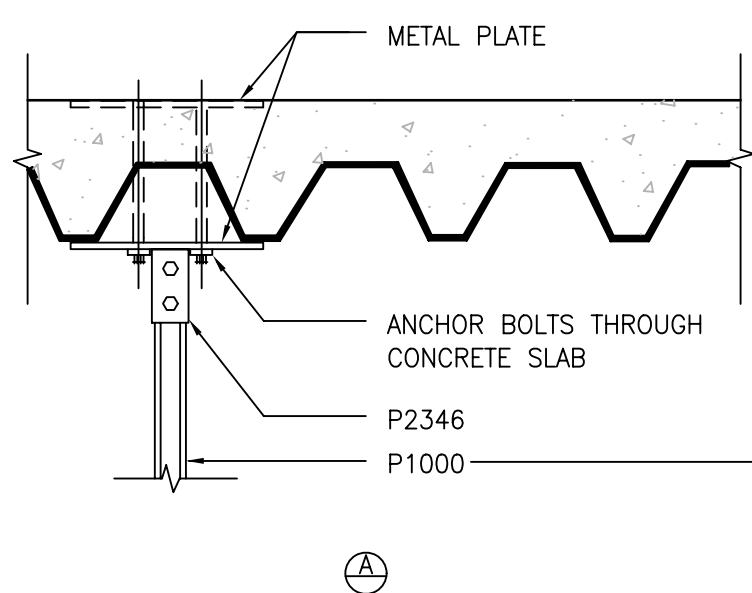


SECTION THROUGH SUPPORT SYSTEM



NOTES:
 ALL SUPPORTS AND HANGERS SHALL BE ARRANGED AS SHOWN ON ARCHITECTURAL DRAWINGS AND SHALL TERMINATE APPROX. 6" [150mm] FROM FACE OF WALLS OR PARTITIONS, EXCEPT FOR MEMBERS FLUSH WITH CEILING.
 THE NUMBER SHOWN ON DRAWING WITH A "P" PREFIX ARE UNISTRUT CATALOG NUMBERS USED AS A CONVENIENCE FOR IDENTIFYING DESIRED SHAPES AND THICKNESS OF MEMBERS.

NOTE FOR ARCHITECT:
 DETAILS A, B, C & D SHOW ANCHORAGE SUPPORT INTO VARIOUS TYPES OF SLAB CONDITIONS. ACTUAL SUPPORT MUST BE DESIGNED TO SUIT THE PARTICULAR SITUATION.

DETAIL TITLE / DOD / VA UNIVERSAL X-RAY (R-F) ROOM SUPPORT SYSTEM FOR CEILING MOUNTED X-RAY EQUIPMENT