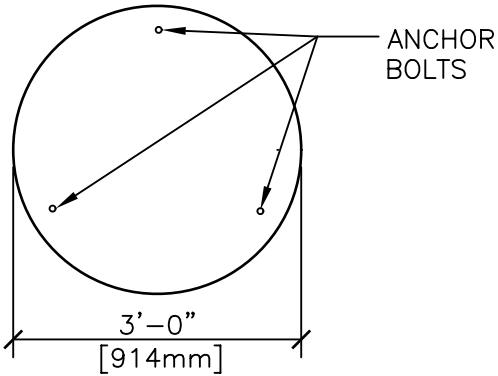


SEAL SIZE "C"



SEAL SIZE "B"

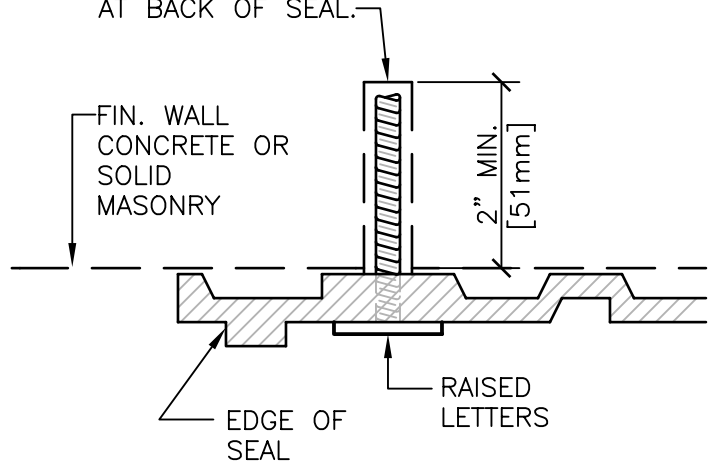


SEAL SIZE "A"

ELEVATIONS

DRILL (3) - 1 1/2" [38mm] ROUND HOLES. MOUNT SEAL ON SOLID MASONRY OR CONCRETE. ANCHOR WITH NON-SHRINK MORTAR.

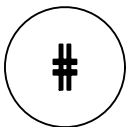
3/8" [10mm] THREADED BRONZE STUDS, SCREW INTO SOLID METAL PORTION AT BACK OF SEAL.



SECTION @ FASTENER

GENERAL NOTES:

1. SEALS LOCATION SHOULD BE TAKEN FROM CONTRACT DRAWINGS.
2. SEALS ARE FURNISHED BY THE DEPARTMENT OF VETERANS AFFAIRS AND INSTALLED BY THE GENERAL CONTRACTOR.
3. SIZE OF THE SEAL SHALL BE DETERMINED BY THE VA.
4. MATERIAL IS CAST BRONZE.
5. DETAIL OF ANCHORAGE MUST BE PROVIDED BY A/E FOR ANCHORAGE IN ANY MATERIAL OTHER THAN SOLID MASONRY OR CONCRETE.



SEALS, EXTERIOR

NTS



Department of Veterans Affairs

DETAIL TITLE / SEALS, EXTERIOR

SCALE :NONE

DATE ISSUED: DECEMBER 2008

CAD DETAIL NO.:

SD101400-01.DWG