



Department of
Veterans Affairs

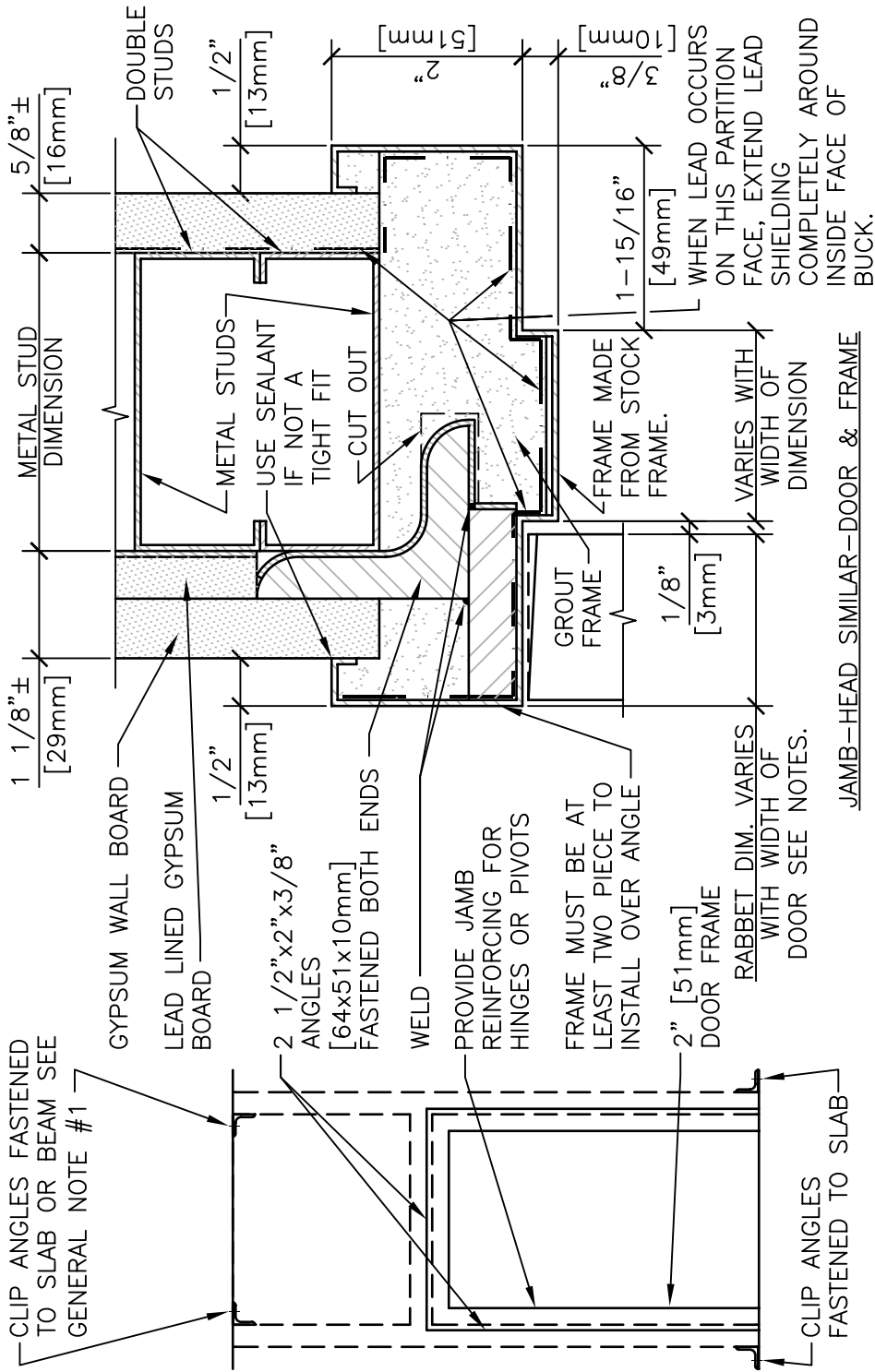
DETAIL TITLE / LEAD LINED DOOR
TYPE 15 AND FRAME

SCALE :NONE

DATE ISSUED: DECEMBER 2008

CAD DETAIL NO.:

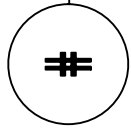
SD081113-03.DWG



ELEVATION

GENERAL NOTES:

1. SPECIAL ANCHORAGE OF CLIP ANGLES AT INTERSTITIAL DECKS MAY BE REQUIRED.
2. THICKNESS OF LEAD AND LEAD GLASS IN DOORS IS TO BE DETERMINED BY A REGISTERED HEALTH PHYSICIST AND REVIEWED BY THE VA HEALTH PHYSICS PROGRAM OFFICE.
3. LEAD IS NOT REQUIRED IN THE DOOR HEAD WHEN IT IS ONLY REQUIRED IN WALLS TO 7'-0" [2134mm] HEIGHT.



LEAD LINED DOOR TYPE 15 AND FRAME

NTS