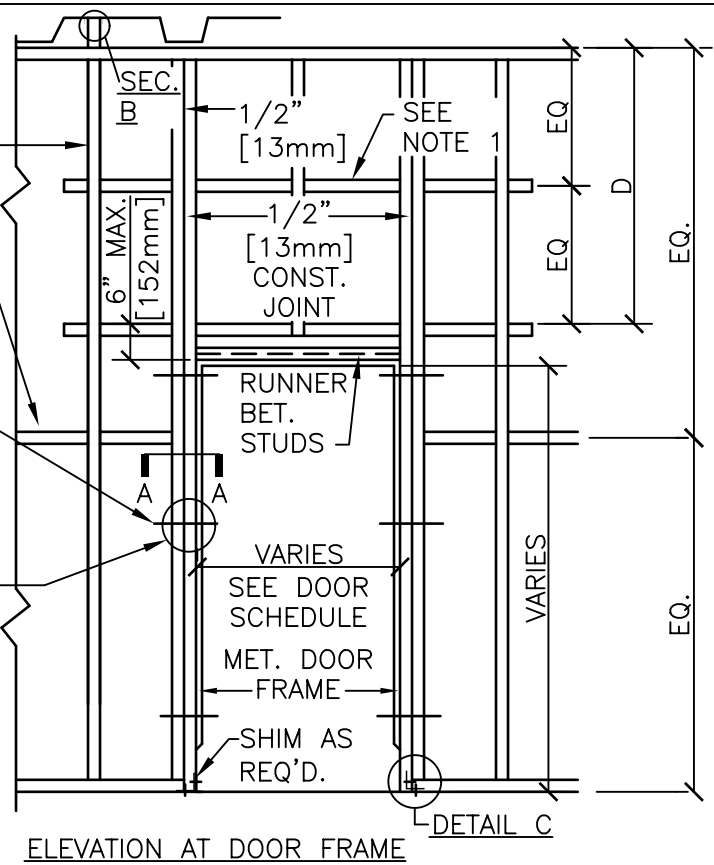


VERTICAL STUDS @ 2'-0" [610mm] MAX.  
 W/GYPSUM WALLBD. 1'-4" [406mm] W/GYPSUM  
 LATH & PLASTER DOUBLE STUDS FOR SUPPORTING  
 CONC. BACKER BOARD.

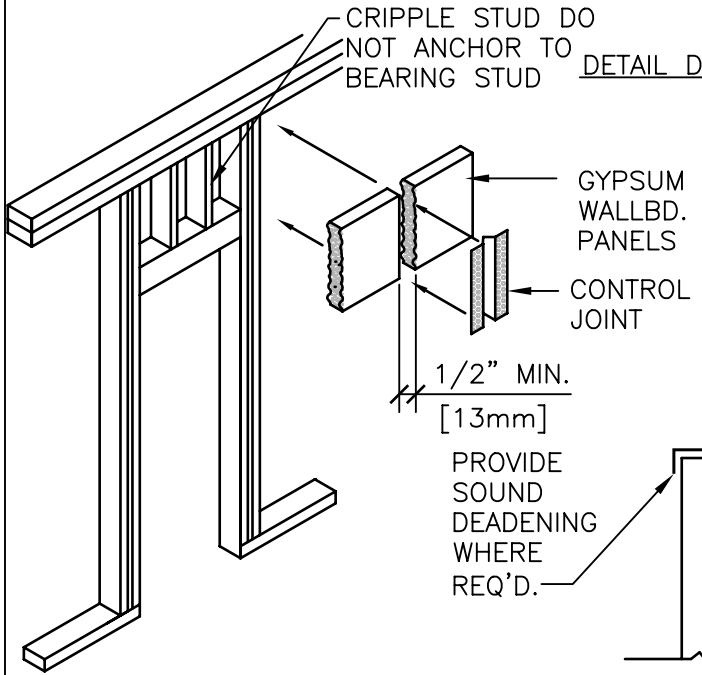
PROVIDE CONTINUOUS BRACING WHEN STUDS  
 EXCEED 10'-0" [3048mm] & ARE FINISHED BOTH  
 SIDES

JAMB ANCHOR CLIPS 3 PER SIDE -  
 COORDINATE W/HINGE REINFORCEMENT.

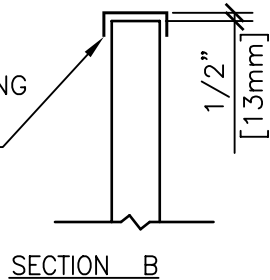
NOTE 1:  
 OMIT BRACE WHEN "D" DIMENSION IS LESS  
 THAN 2'-0" [610mm] FOR GYP. WALLBD.  
 OR 16" [400mm] FOR PLASTER PARTITION.



ELEVATION AT DOOR FRAME

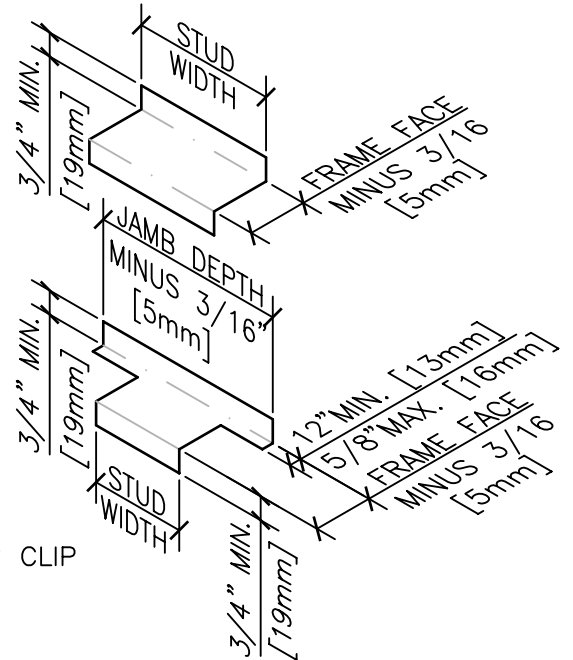


ISOMETRIC OF CONSTR. JT.

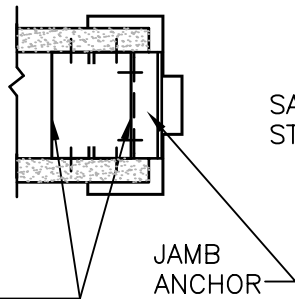


SECTION B

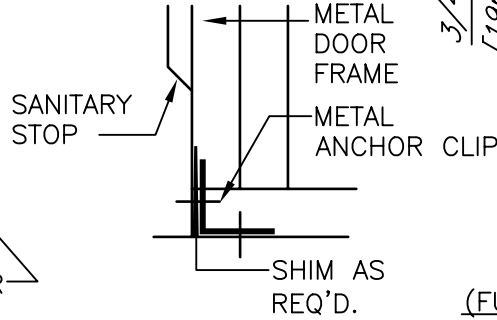
PROVIDE  
 SOUND  
 DEADENING  
 WHERE  
 REQ'D.



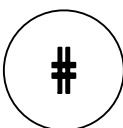
JAMB ANCHORS  
 (FURNISHED WITH FRAME)



SECTION A



DETAIL C



# PARTITION FRAMING FOR DOORS

NTS



Department of  
 Veterans Affairs

DETAIL TITLE / PARTITION FRAMING FOR DOORS

SCALE : NONE

DATE ISSUED : DECEMBER 2008

CADD DETAIL NO. : SD081113-01.DWG