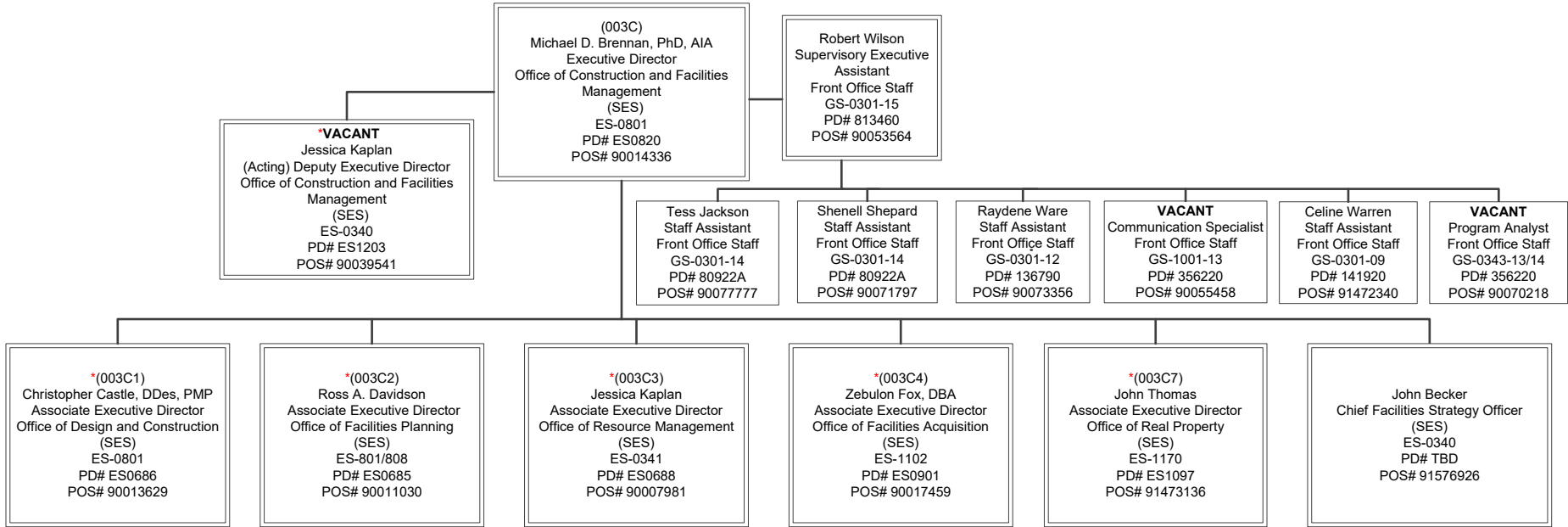


STAFFING LEVELS
FTE ONBOARD = 7
FTE VACANT AND FUNDED = 2
TOTAL FTE = 9
* AED's included on their respective charts

**Office of Construction and Facilities Management
Front Office (003C)**



Associate Executive Director
Office of Resource Management

Date

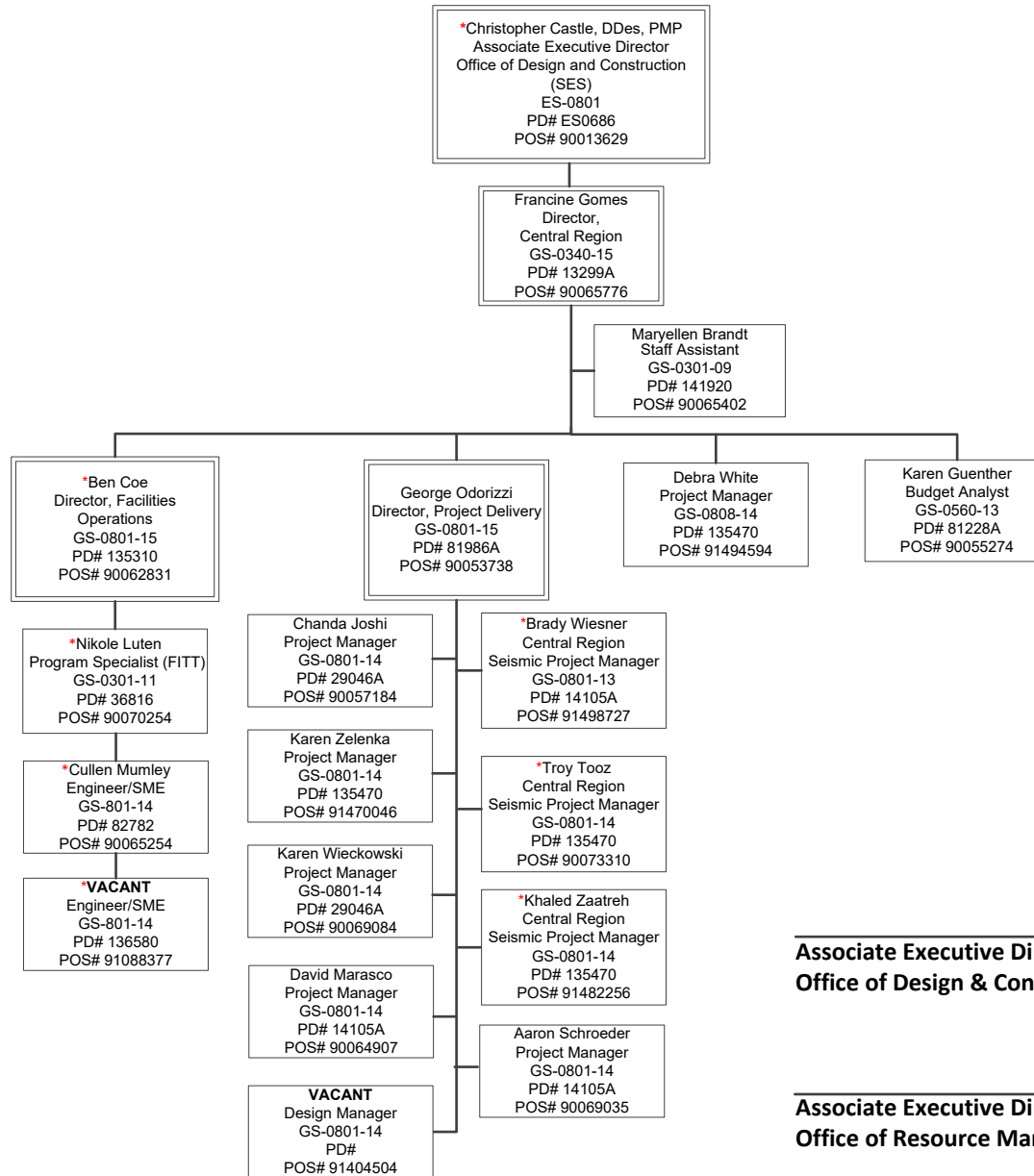
Executive Director
Construction and Facilities Management

Date

Updated:
06/06/2022

Office of Construction and Facilities Management
Office of Design and Construction - Central Region (003C1C)

STAFFING LEVELS
FTE ONBOARD = 10
FTE VACANT AND FUNDED = 1
TOTAL FTE = 11
*COUNTED ELSEWHERE



Associate Executive Director
Office of Design & Construction

Date

Associate Executive Director
Office of Resource Management

Date

Executive Director
Construction and Facilities Management

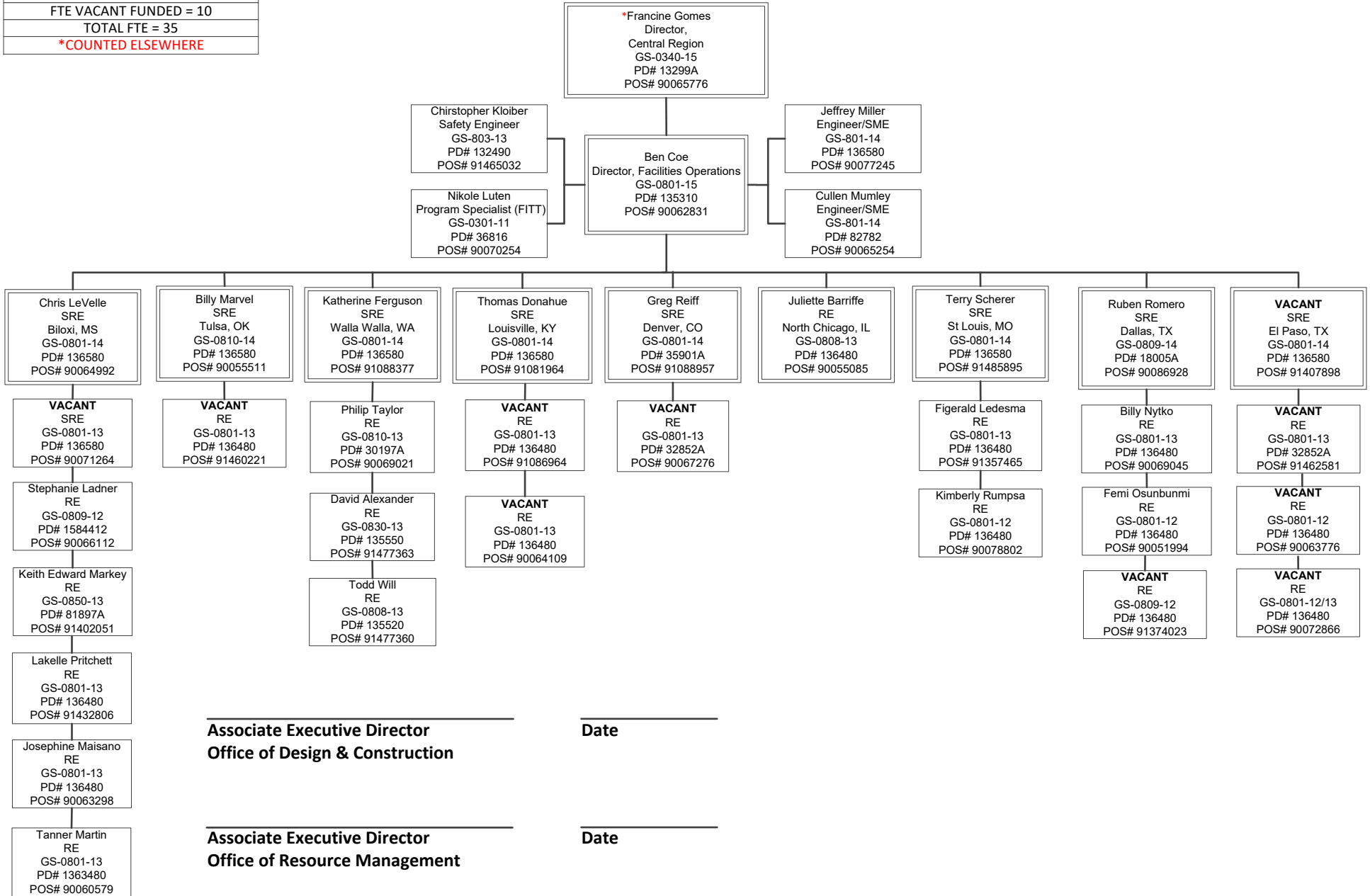
Date

Updated:
 09/20/2022

Office of Construction and Facilities Management

Office of Design and Construction - Central Region Field (003C1C)

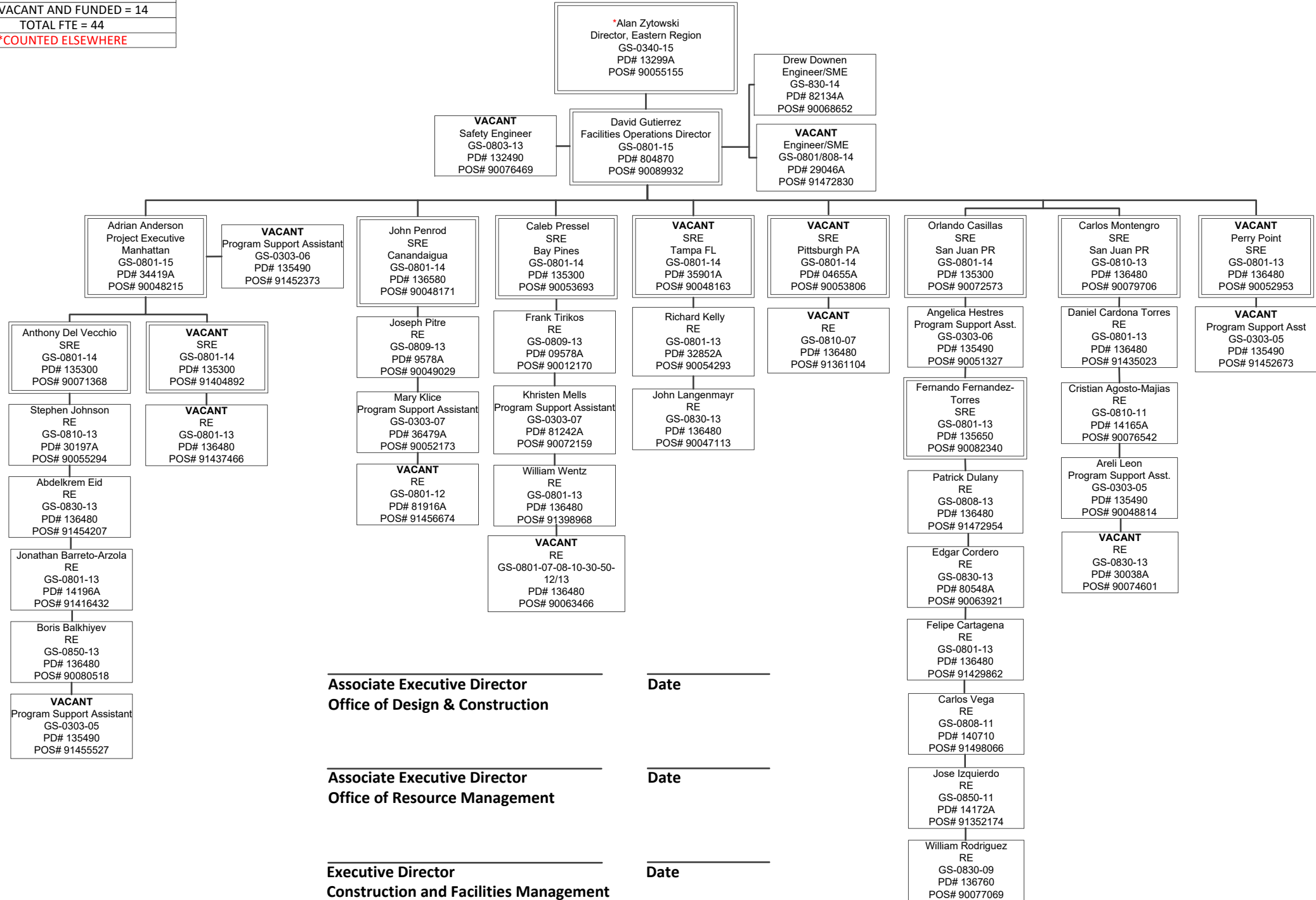
STAFFING LEVELS
FTE ONBOARD = 25
FTE VACANT FUNDED = 10
TOTAL FTE = 35
*COUNTED ELSEWHERE



Updated:
09/20/2022

STAFFING LEVELS
FTE ONBOARD = 30
FTE VACANT AND FUNDED = 14
TOTAL FTE = 44
*COUNTED ELSEWHERE

**Office of Construction and Facilities Management
Office of Design and Construction - Eastern Region Field (003C1B)**



Associate Executive Director
Office of Design & Construction

Date

Associate Executive Director
Office of Resource Management

Date

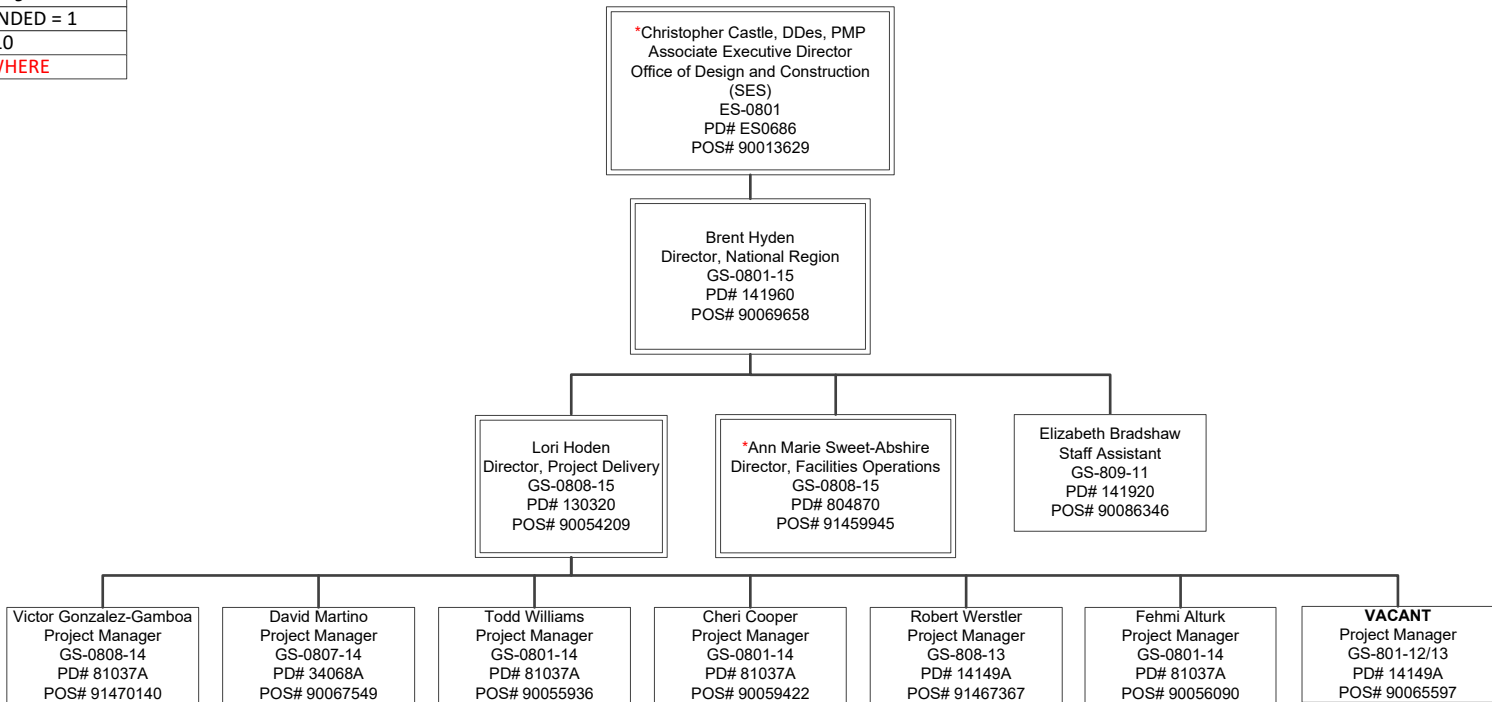
Executive Director
Construction and Facilities Management

Date

Updated:
09/20/2022

**Office of Construction and Facilities Management
Office of Design and Construction National Region (003C1A)**

STAFFING LEVELS
FTE ONBOARD = 9
FTE VACANT AND FUNDED = 1
TOTAL FTE = 10
*COUNTED ELSEWHERE



Associate Executive Director
Office of Design & Construction

Date

Associate Executive Director
Office of Resource Management

Date

Executive Director
Construction and Facilities Management

Date

Updated:
08/31/2022

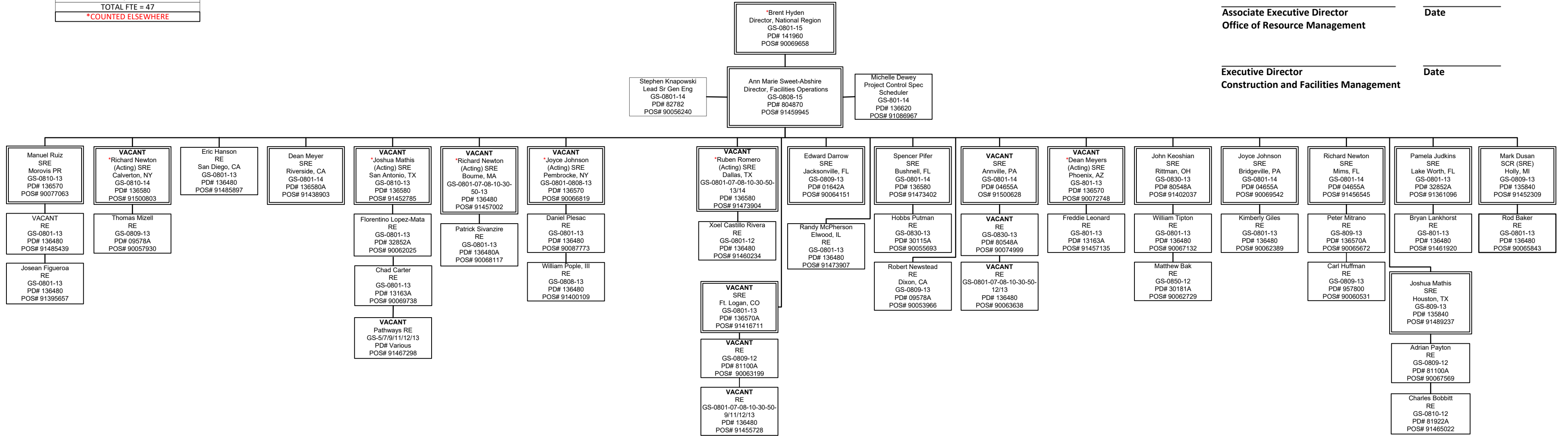
Office of Construction and Facilities Management
Office of Design and Construction National Region Field Staff (003C1A)

STAFFING LEVELS
FTE ONBOARD = 35
FTE VACANT = 12
TOTAL FTE = 47
*COUNTED ELSEWHERE

 Associate Executive Director
 Office of Design & Construction Date

 Associate Executive Director
 Office of Resource Management Date

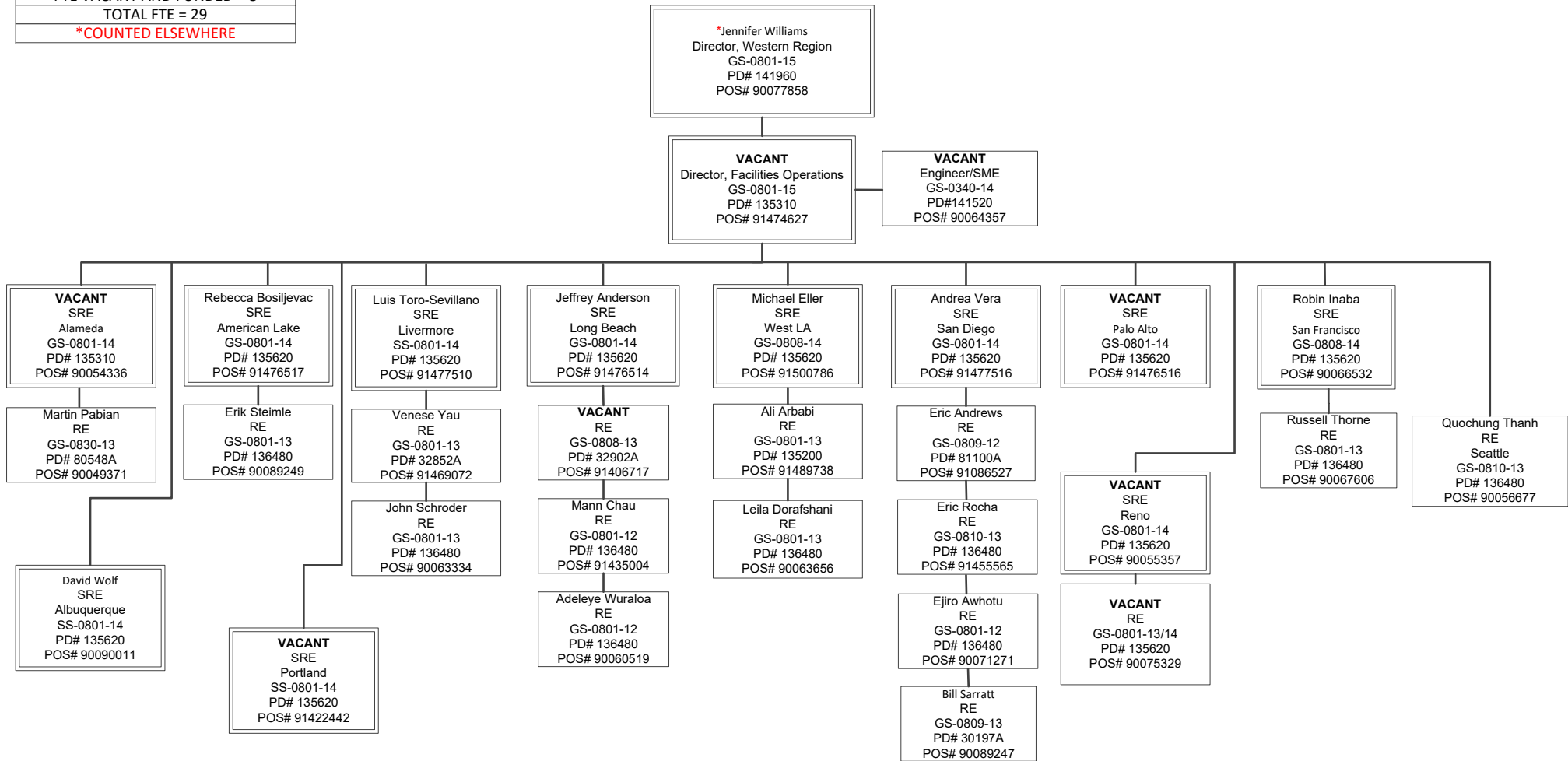
 Executive Director
 Construction and Facilities Management Date



Updated:
9/19/2022

Office of Construction and Facilities Management
Office of Design and Construction - Western Region Field (003C1D)

STAFFING LEVELS
FTE ONBOARD = 21
FTE VACANT AND FUNDED = 8
TOTAL FTE = 29
*COUNTED ELSEWHERE



 Associate Executive Director
 Office of Design & Construction

 Date

 Associate Executive Director
 Office of Resource Management

 Date

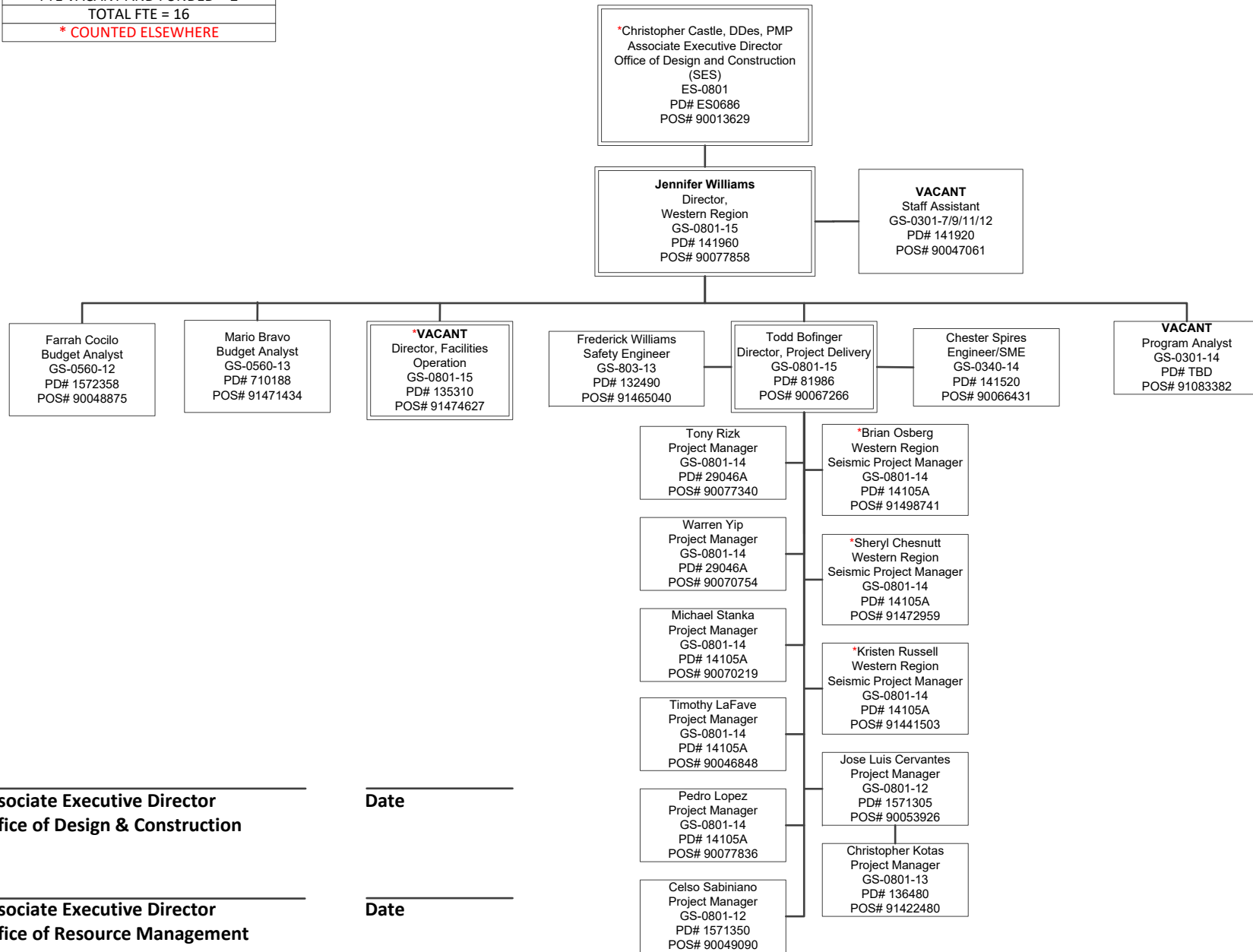
 Executive Director
 Construction and Facilities Management

 Date

Updated:
 08/31/2022

STAFFING LEVELS
FTE ONBOARD = 14
FTE VACANT AND FUNDED = 2
TOTAL FTE = 16
* COUNTED ELSEWHERE

**Office of Construction and Facilities Management
Office of Design and Construction - Western Region (003C1D)**



Associate Executive Director
Office of Design & Construction

Date

Associate Executive Director
Office of Resource Management

Date

Executive Director
Construction and Facilities Management

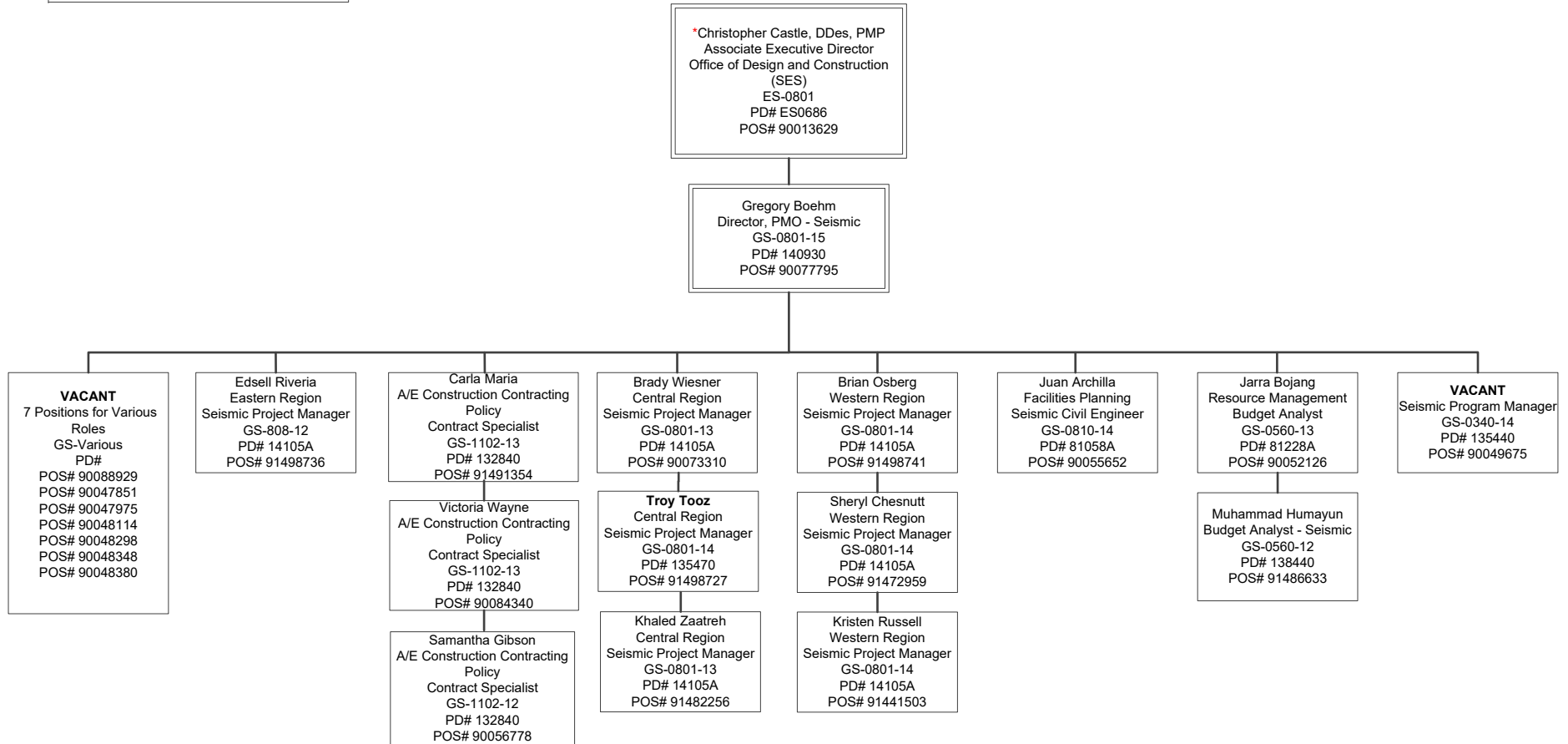
Date

Updated:
08/31/2022

STAFFING LEVELS
FTE ONBOARD = 14
FTE VACANT AND FUNDED = 8
TOTAL FTE = 22
*COUNTED ELSEWHERE

Office of Construction and Facilities Management

Seismic



Associate Executive Director
Office of Design & Construction

Date

Associate Executive Director
Office of Resource Management

Date

Executive Director
Construction and Facilities Management

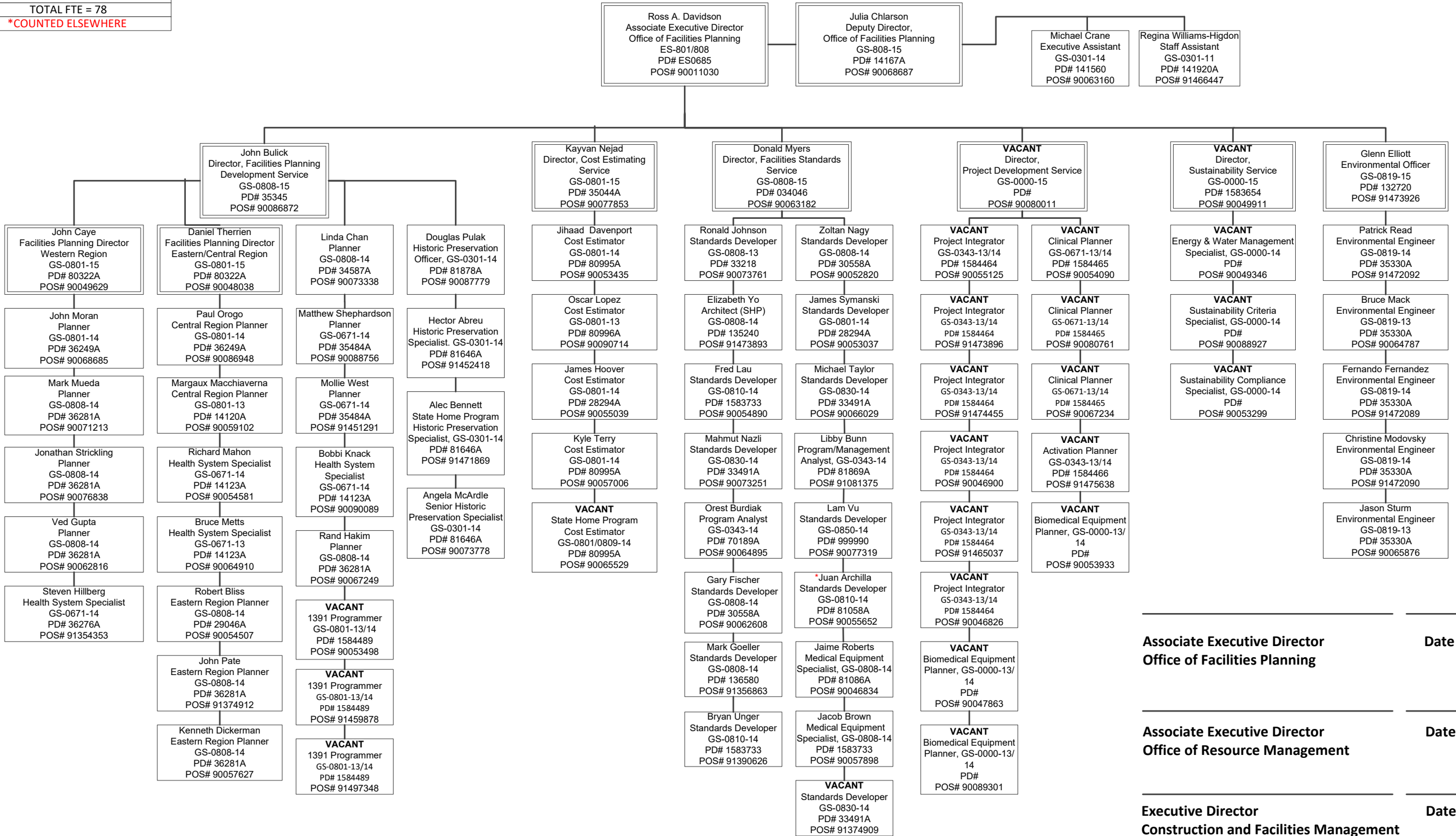
Date

Updated:
08/31/2022

STAFFING LEVELS
FTE ONBOARD = 55
FTE VACANT = 23
TOTAL FTE = 78
*COUNTED ELSEWHERE

Update:
09/07/2022

Office of Construction and Facilities Management Office of Facilities Planning (003C2)



Associate Executive Director
Office of Facilities Planning

Date

Associate Executive Director
Office of Resource Management

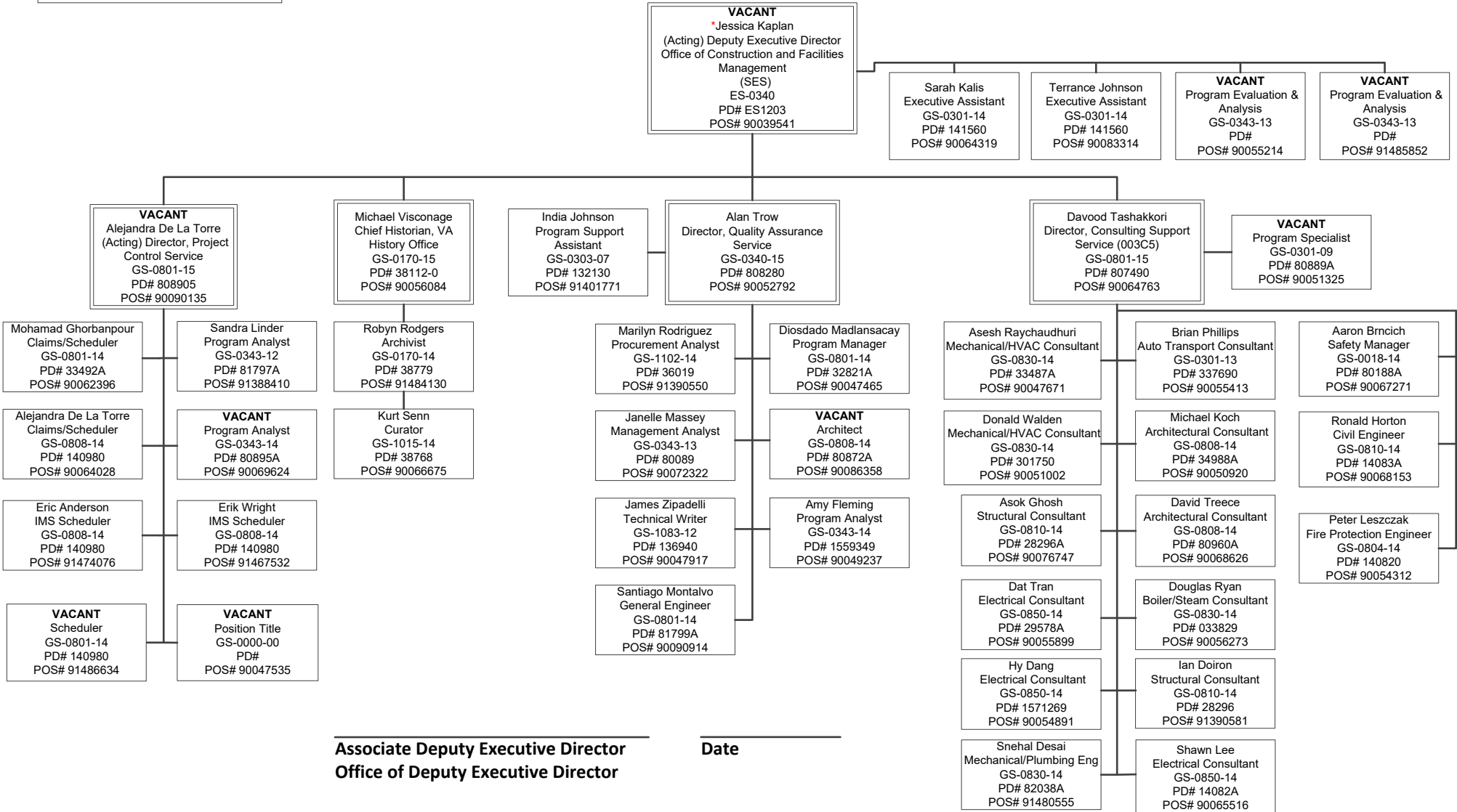
Date

Executive Director
Construction and Facilities Management

Date

STAFFING LEVELS	
FTE ONBOARD = 34	
FTE VACANT AND FUNDED = 9	
TOTAL FTE = 43	
*COUNTED ELSEWHERE	

**Office of Construction and Facilities Management
Office of the Deputy Executive Director (003C6)**



Associate Deputy Executive Director
Office of Deputy Executive Director Date

Associate Executive Director
Office of Resource Management Date

Executive Director
Construction and Facilities Management Date

Updated:
08/6/2022

STAFFING LEVELS
FTE ONBOARD = 78
FTE VACANT AND FUNDED = 9
TOTAL FTE = 87

Office of Construction and Facilities Management

Office of Real Property (003C7)

Associate Executive Director
Office of Real Property

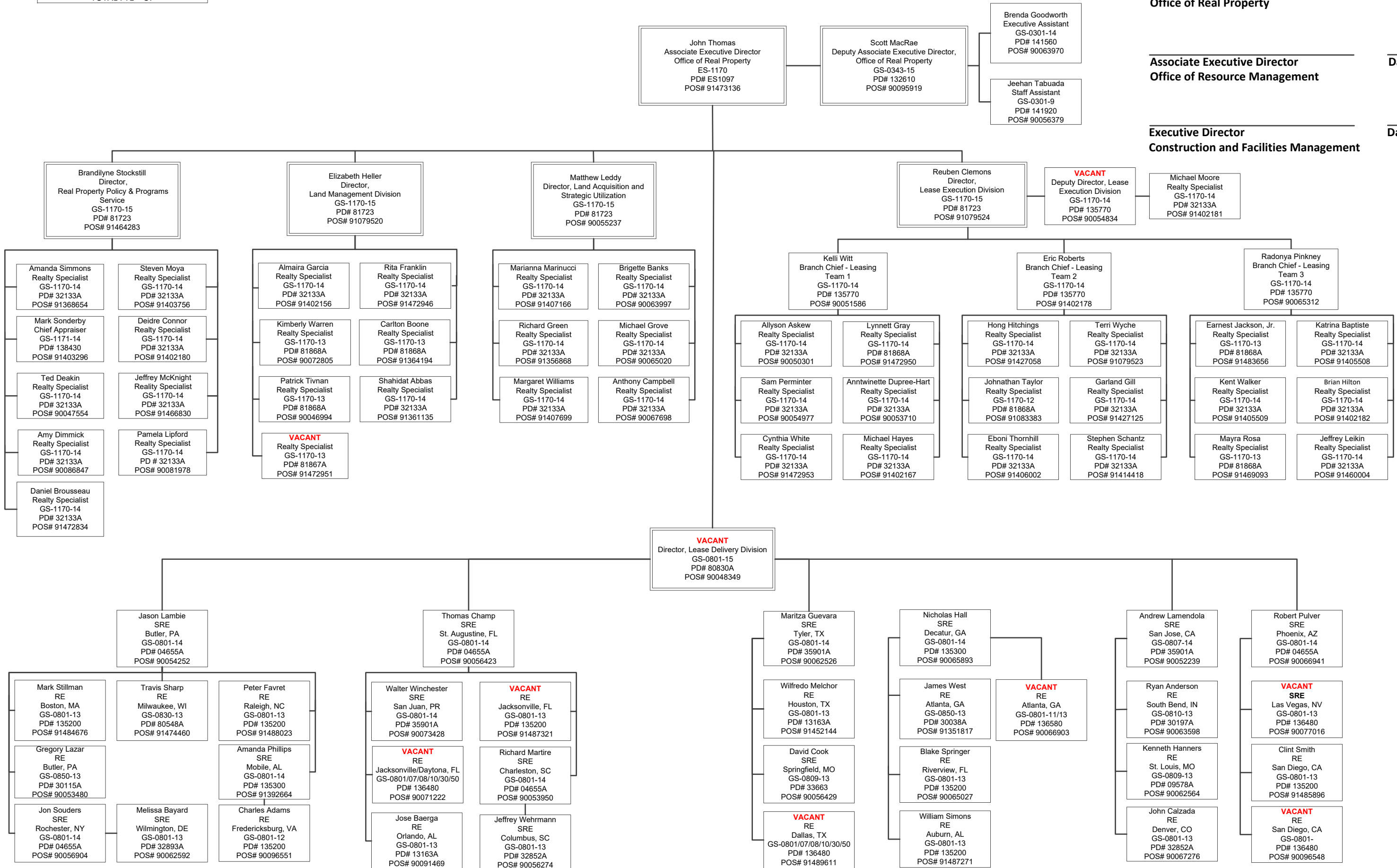
Date

Associate Executive Director
Office of Resource Management

Date

Executive Director
Construction and Facilities Management

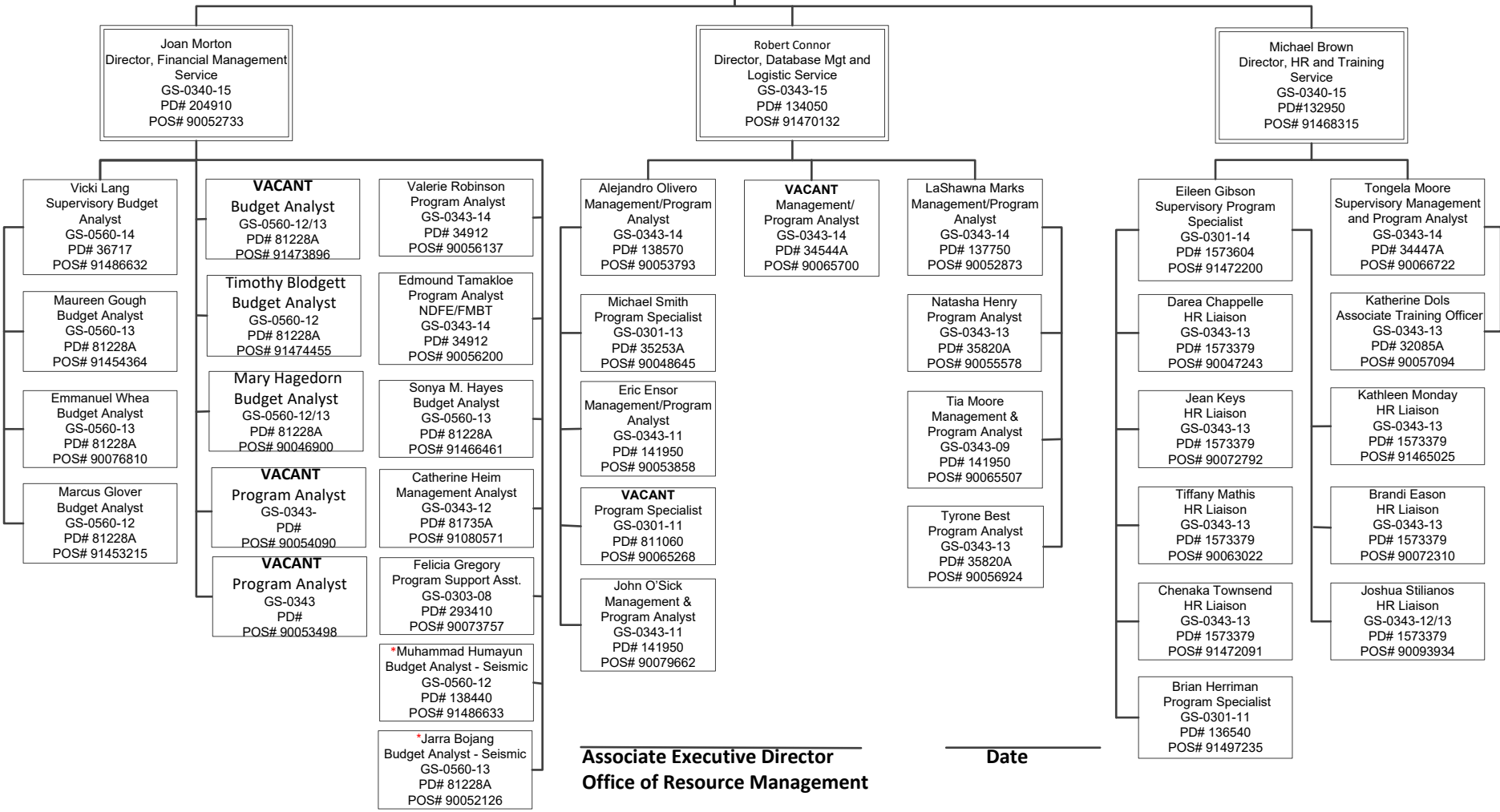
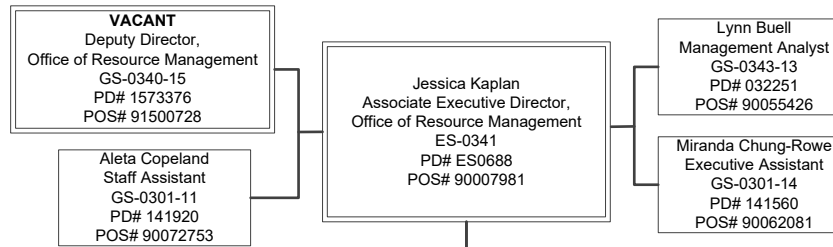
Date



Office of Construction and Facilities Management

Office of Resource Management (003C3)

STAFFING LEVELS
FTE ONBOARD = 37
FTE VACANT AND FUNDED = 6
TOTAL FTE = 43
*COUNTED ELSEWHERE



Associate Executive Director
Office of Resource Management

Date

Executive Director
Construction and Facilities Management

Date

Updated:
08/29/2022