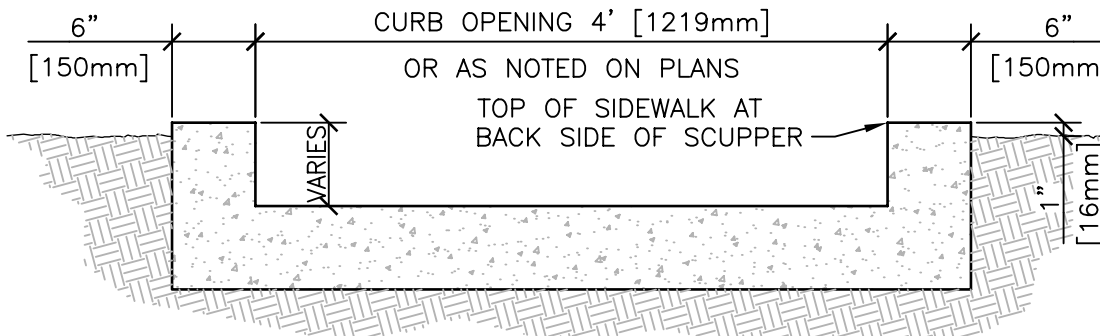
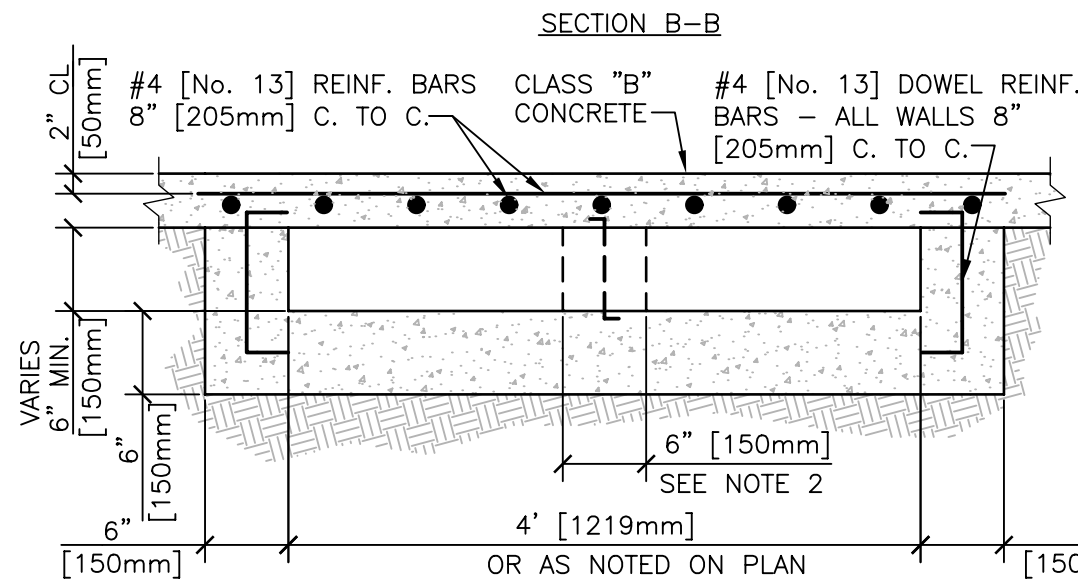
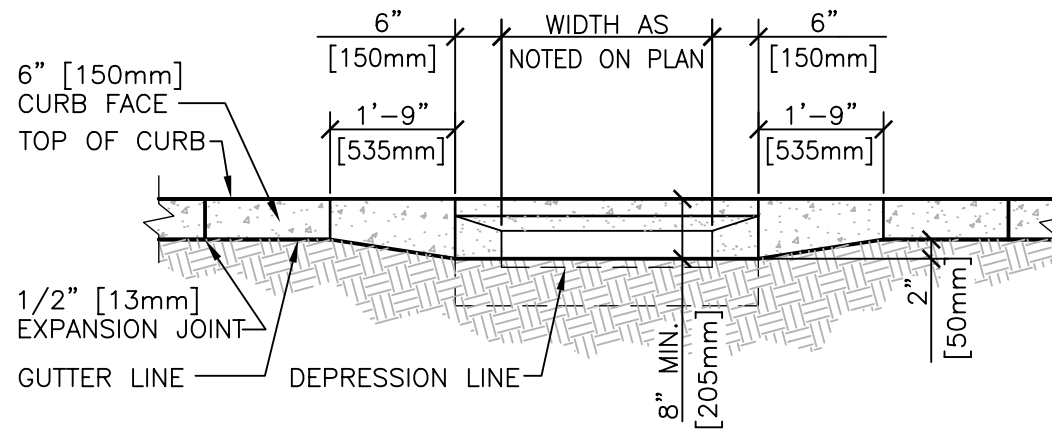


#4 [No. 13] REINF. BARS
8" [205mm] C. TO C.



- NOTES:
1. TRANSITION TO SPILLWAY/ CHANNEL AS PER APPROVED PLANS. SCUPPER GRADE MAY BE MODIFIED TO ALLOW FOR RUNOFF TO FLOW FROM RIGHT-OF-WAY INTO ROADWAY.
 2. A CENTER WALL SHALL BE INSTALLED IN SCUPPERS WIDER THAN 4' [1219mm] OR IF MORE THAN ONE SCUPPER IS BUILT IN SERIES.
 3. EXPANSION JOINT FILLER SHALL BE 1/2" [13mm] BITUMINOUS TYPE PREFORMED EXPANSION JOINT FILLER PER VA SPECIFICATIONS.
 4. CONCRETE SHALL BE CLASS 'S', f'c=3,000 psi [20.7 MPa]

SIDEWALK SCUPPER - TYPE 3
NTS

DETAIL TITLE / SIDEWALK SCUPPER - TYPE 3

Department of Veterans Affairs



SCALE : NONE

DATE ISSUED: DECEMBER 2008

CAD DETAIL NO.: SD320523-09.DWG