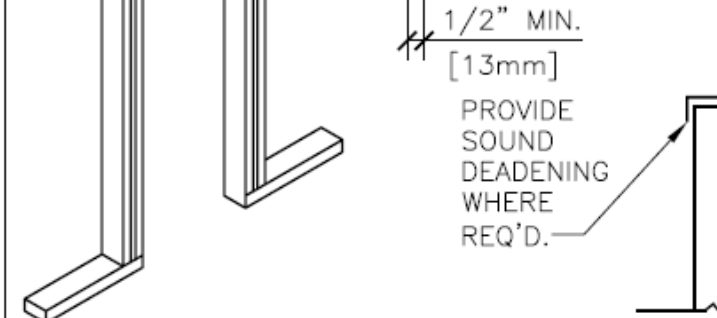
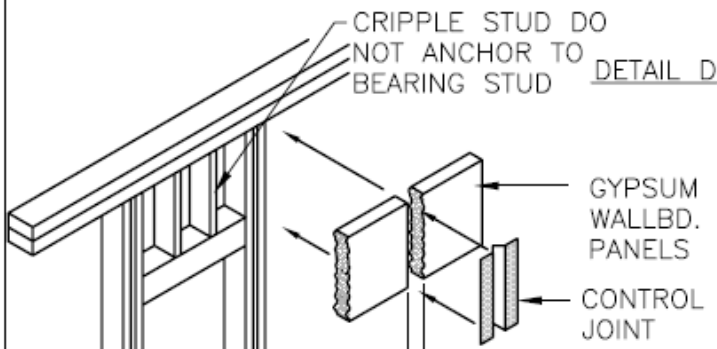
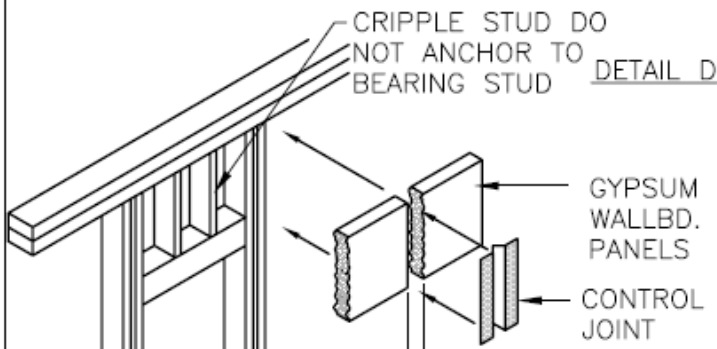


VERTICAL STUDS @ 2'-0" [610mm] MAX.
 W/GYPSUM WALLBD. 1'-4" [406mm] W/GYPSUM
 LATH & PLASTER DOUBLE STUDS FOR SUPPORTING
 CONC. BACKER BOARD.

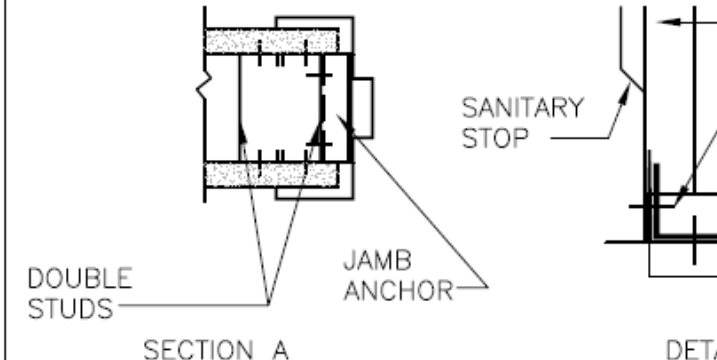
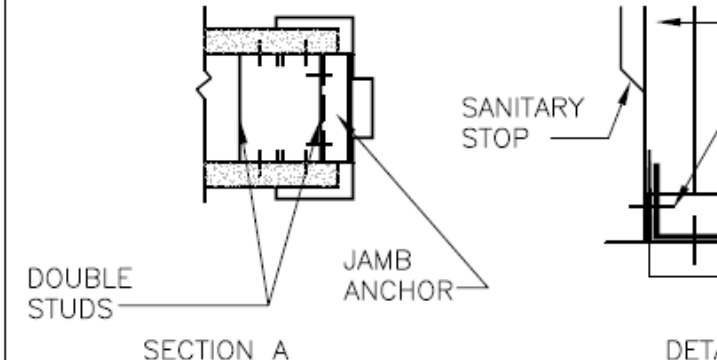
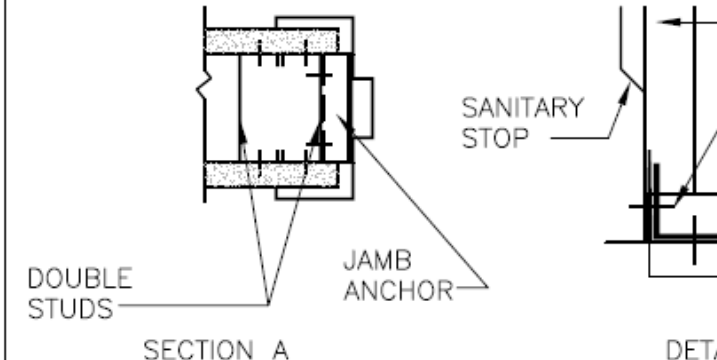
PROVIDE CONTINUOUS BRACING WHEN STUDS
 EXCEED 10'-0" [3048mm] & ARE FINISHED BOTH
 SIDES

JAMB ANCHOR CLIPS 3 PER SIDE -
 COORDINATE W/HINGE REINFORCEMENT.

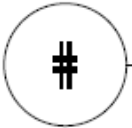
NOTE 1:
 OMIT BRACE WHEN "D" DIMENSION IS LESS
 THAN 2'-0" [610mm] FOR GYP. WALLBD.
 OR 16" [400mm] FOR PLASTER PARTITION.



ISOMETRIC OF CONSTR. JT.



JAMB ANCHORS
 (FURNISHED WITH FRAME)
 DETAIL D



PARTITION FRAMING FOR DOORS

NTS